





# HA80 JRT

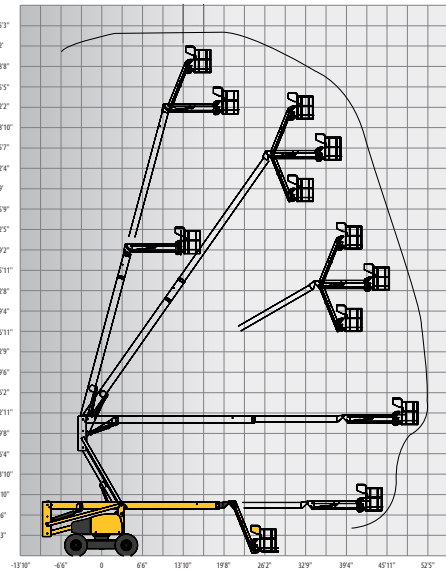


## ROUGH TERRAIN ARTICULATING BOOMS

### TECHNICAL DATA

### HA80 JRT

Working height	83 ft 5 in
Platform height	77 ft 5 in
Horizontal outreach	53 ft 6 in
Up and over height	22 ft 2 in
Lift capacity	500 lbs
<b>F</b> x <b>G</b> Platform size	8 ft x 2 ft 7 in
<b>A</b> Length	39 ft 4 in
<b>H</b> Transport length	31 ft 2 in
<b>B</b> Width	7 ft 10 in
<b>C</b> Height - stowed	8 ft 11 in
Vertical jib rotation	140° (+70/-70)
Platform rotation	180° (+90/-90)
Turntable rotation	360 °
Tailswing riser up	0 ft
Tailswing riser down	5 ft 9 in
<b>D</b> Wheelbase	9 ft 2 in
<b>E</b> Ground clearance	17 in
Drive speed	0.3 - 2.8 mph
Gradeability	40 %
Turning radius - outside	12 ft 10 in
Tires	385/65-22.5
Engine	33.2 kW - 45.1 hp
Weight	35,037 lbs



### STANDARD EQUIPMENT

- 4 wheel drive, 4 wheel steer
- Differential wheel lock
- Fully proportional controls
- 4 simultaneous movements
- 500lbs (2 persons) load capacity
- Tilt / load alarm and light
- Electric pump system and emergency descent
- 12 V battery / electrical control system
- Foam filled rough terrain tires
- 8' platform with drop bar
- AC power to the platform
- Electric horn
- Low fuel level indicator (upper control box)
- Hour meter
- Swing lockpin for transport
- Tow hooks

### OPTIONS AND ACCESSORIES

- AC generator 110V / 3kW
- Arctic Package (consult factory)
- Alarm package (motion alarm)
- Travel alarm
- Flashing beacon
- Air line to platform
- 55W platform worklight
- Hydraulic oil cooler
- Hydraulic oil in tank and circuit for warm countries
- Biodegradable hydraulic oil
- Upper control box protection cover (transparent plastic and fixed place)
- Automatic Overspeed Air Shutdown Valve (Electric one-way valve, flame arrester, spark arrester)

