



**HB40**

**HB44 J**

**Exceptional productivity**

- Fully proportional controls and simultaneous boom functions
- 360° continuous turntable rotation

**Outstanding rough terrain driving features**

- Hydraulic differential lock
- 4 wheel drive
- 14 in ground clearance

**35 ft 6 in (HB40) and 40 ft 9 in (HB44 J) outreach provides a large working envelope**



*The Lifting Professionals*

Bolingbrook, IL  
(630) 972-9199

South Holland, IL  
(219) 972-9199

[Click Here to Request a Quote](#)



**Haulotte**   
GROUP

More than lifting



# HB40 / HB44 J

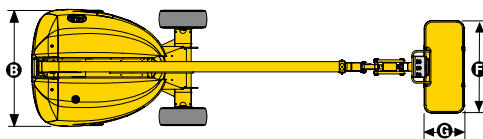
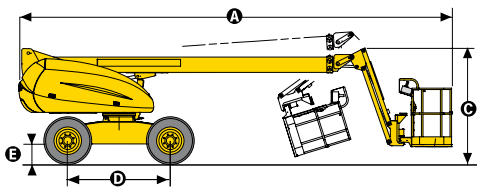
ROUGH TERRAIN TELESCOPIC BOOMS

## TECHNICAL DATA

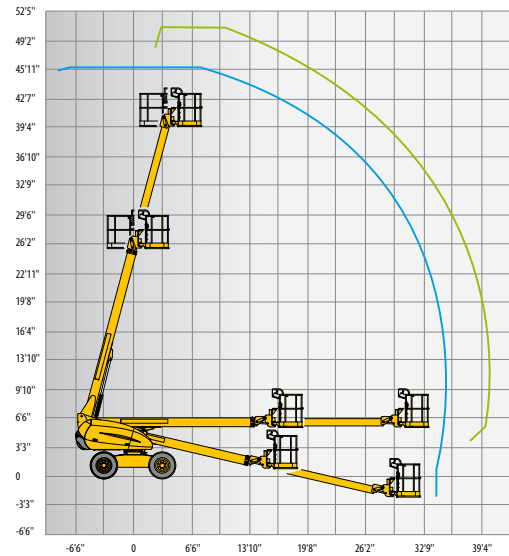
### HB40

### HB44 J

Working height	45 ft 7 in	50 ft 1 in
Platform height	39 ft 7 in	44 ft 1 in
Horizontal outreach	35 ft 6 in	40 ft 9 in
Lift capacity	500 lbs	440 lbs
<b>F x G</b> Platform size	7 ft 6 in x 2 ft 7 in	7 ft 6 in x 2 ft 7 in
<b>A</b> Length	24 ft 11 in	27 ft 8 in
Length - storage	24 ft 11 in	22 ft 1 in
<b>B</b> Overall width	7 ft 7 in	7 ft 7 in
<b>C</b> Height - stowed	7 ft 3 in	7 ft 3 in
Height - storage	7 ft 3 in	8 ft 2 in
Vertical jib rotation	N/A	140° (+70/-70)
Platform rotation	180° (+90/-90)	180° (+90/-90)
Boom rotation angle	+75°/-13°	+75°/-13°
Turntable rotation	360 °	360 °
Tailswing	34 in	34 in
<b>D</b> Wheelbase	6 ft 7 in	6 ft 7 in
<b>E</b> Ground clearance	14 in	14 in
Drive speed	0.5 - 3.7 mph	0.5 - 3.7 mph
Gradeability	50 %	50 %
Turning radius - outside	14 ft 9 in	14 ft 9 in
Tires	14-17.5	14-17.5
Engine	28 kW - 38 hp	28 kW - 38 hp
Weight	13,318 lbs	14,994 lbs



— HB44 J  
— HB40



## STANDARD EQUIPMENT

- 4 wheel drive, 2 wheel steer
- Foam filled rough terrain tires
- Hour meter
- Rotating engine tray for easy maintenance
- Swing lockpin for transport
- Tow hooks
- Large platform
- AC power to platform
- Electric horn
- Fully proportional controls
- Tilt alarm

## OPTIONS AND ACCESSORIES

- AC generator 110V / 3 kW
- Arctic package (consult factory)
- Alarm package (motion alarm)
- Flashing beacon
- 55 W platform worklight
- Travel alarm
- Descent alarm

