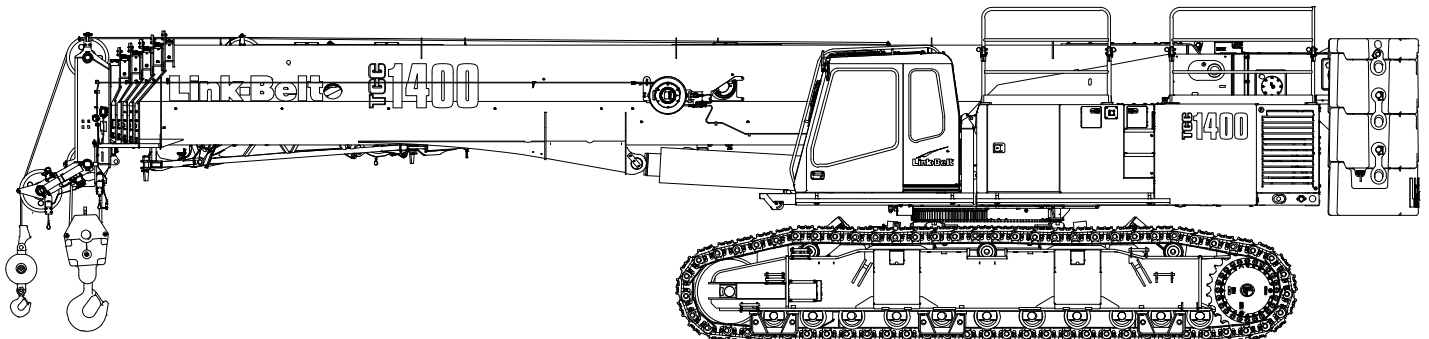


# Technical Data

Specifications & Capacities  
Imperial/Metric

# TCC 1400

Telescopic Crawler Crane  
140 Ton (127 metric ton)



**CAUTION:** This material is supplied for reference use only. Operator must refer to in-cab Crane Rating Manual and Operator's Manual to determine allowable crane lifting capacities and assembly and operating procedures.



# Table Of Contents

<b>Upper Structure</b> .....	<b>1</b>
Frame .....	1
Engine .....	1
Hydraulic System .....	1
Load Hoist Drums .....	1
Swing System .....	1
Counterweight .....	1
Operator's Cab .....	1
Rated Capacity Limiter System .....	2
Machinery House .....	2
Catwalks .....	2
Optional .....	2
<b>Lower Structure</b> .....	<b>2</b>
Carbody .....	2
Side Frames .....	2
Travel and Steering .....	2
Jack System .....	2
Optional Tool Boxes .....	2
<b>Boom</b> .....	<b>3</b>
Design .....	3
Boom .....	3
Optional .....	3
Boom Wear Pads .....	3
Boom Head .....	3
Boom Elevation .....	3
<b>Optional Equipment</b> .....	<b>3</b>
Hook Blocks And Balls .....	3
Fly & Attachments .....	3
<b>Dimensions</b> .....	<b>4</b>
Base Crane .....	4
Auxiliary Lifting Sheave .....	7
Fly .....	7
Side Frames .....	7
Counterweights .....	8
Hook Balls .....	9
Hook Blocks .....	9
<b>Working Weights</b> .....	<b>11</b>
<b>Transport Drawing</b> .....	<b>11</b>
<b>Load Hoist Performance</b> .....	<b>11</b>
<b>Working Areas</b> .....	<b>12</b>
<b>Boom Extend Modes</b> .....	<b>13</b>
<b>Working Range Diagrams</b> .....	<b>14</b>
Main Boom .....	14
195.4' Main Boom + 10' Fly .....	15
180' Main Boom + 10, 31–55' Fly .....	16

<b>Main Boom Load Charts – Standard</b> .....	<b>17</b>
Main Boom - EM1 Boom Mode .....	17
Main Boom - EM2 Boom Mode .....	18
Main Boom - EM3 Boom Mode .....	19
Main Boom - EM4 Boom Mode .....	20
Main Boom - EM5 Boom Mode .....	21
<b>Fly Attachment Load Charts – Standard</b> .....	<b>22</b>
Main Boom EM2 + 10' Offset Fly .....	22
Main Boom EM2 + 31' Offset Fly .....	26
Main Boom EM2 + 55' Offset Fly .....	28
<b>Main Boom Load Charts – Metric</b> .....	<b>30</b>
Main Boom - EM1 Boom Mode .....	30
Main Boom - EM2 Boom Mode .....	31
Main Boom - EM3 Boom Mode .....	32
Main Boom - EM4 Boom Mode .....	33
Main Boom - EM5 Boom Mode .....	34
<b>Fly Attachment Load Charts – Metric</b> .....	<b>37</b>
Main Boom EM2 + 3.0m Offset Fly .....	37
Main Boom EM2 + 9.4m Offset Fly .....	39
Main Boom EM2 + 16.7m Offset Fly .....	41

# Upper Structure

## Frame

All welded steel frame with precision machined surfaces for mating parts.

### Turntable Bearing

- Inner race is bolted to upper frame
- Outer race with external swing gear is bolted to lower frame

## Engine

### Engine

Full pressure lubrication, oil filter, air cleaner, hour meter, throttle, and electric control shutdown.

Specification	Cummins QSL	
Emissions Compliance Level:	Tier 4f Stage IV <sup>(1)</sup>	Tier 3/ Stage IIIA <sup>(2)</sup>
Numbers of Cylinders	6	6
Cycle	4	4
Bore & Stroke: inch (mm)	4.49 x 5.69 (114 x 145)	4.49 x 5.69 (114 x 145)
Piston Displacement: in <sup>3</sup> (L)	543 (8.90)	543 (8.90)
Max. Brake Horsepower: hp (kW)	320 (239) @ 1,800 rpm	325 (242) @ 1,800 rpm
Peak Torque: ft lb (Nm)	1,050 (1 424) @ 1,500 rpm	1,050 (1 424) @ 1,500 rpm
Electric/starting systems: volts	12/12	12/12
Alternator: amps	160	160
Crankcase Capacity: qt (L)	24 (22.7)	24 (22.7)
	<ul style="list-style-type: none"> <li>• Water/fuel separator w/ heater and water in fuel (WIF) sensor</li> <li>• 120-volt block heater</li> <li>• Grid heater — 200 amp</li> <li>• <sup>(1)</sup> Can only be sold and/or operated where Tier 4f and Stage IV off-high way emission standards are accepted.</li> <li>• <sup>(2)</sup> Can only be sold and/or operated where Tier 3 and Stage IIIA off-high way emission standards are accepted.</li> </ul>	

### Fuel Tank

One 110 gal (416L) capacity fuel tank.

## Hydraulic System

### Hydraulic Pumps

The pump arrangement is designed to provide hydraulically powered functions allowing positive, precise control with independent or simultaneous operation of all crane functions.

- Two variable displacement pumps provide independent control for hoist drums, boom hoist, boom extend, and right & left travel.
- Two gear type pumps are used for the swing, counterweight removal, track extend/retract, tilting cab, jacks, operator's controls, and hydraulic oil cooling fan.

### Hydraulic Reservoir

250 gal (946L) capacity equipped with sight level gauge. Diffusers built in for deaeration.

### Filtration

One 10 micron, full flow return line filter. Accessible for easy filter replacement.

### Counterbalance Valves

All hoist motors are equipped with counterbalance valves to provide positive load lowering and prevent accidental load drop if the hydraulic pressure is suddenly lost.

## Load Hoist Drums

### Main and Optional Auxiliary Winches

- Axial piston, full and half displacement (2-speed) motor driven through planetary reduction unit for positive control under all load conditions.
- Grooved lagging
- Power up/down mode of operation
- Hoist drum cable follower — standard
- Drum rotation indicator
- Drum diameter: 15 in (38.1 cm)
- Rope length:
  - Main: 900 ft (274.3m)
  - Auxiliary: 650 ft (152.4m)
- Maximum rope storage: 951 ft (198.1m)
- Terminator style socket and wedge

**Third wrap indicator — optional** — Visually and audibly warns the operator when the wire rope is on the first/bottom layer and when the wire rope is down to the last three wraps

## Swing System

### Dual Swing Drives

**Motor/Planetary** — Bi-directional hydraulic swing motor mounted to a planetary reducer for 360° continuous smooth swing at 1.2 rpm

**Swing Park Brake** — 360°, electric over hydraulic, (spring applied/hydraulic released) multi-disc brake mounted on the planetary reducer. Operated by a switch in the operator's cab.

**Swing Brake** — 360°, foot operated, electric over hydraulic proportional metering valve

**House Lock** — Four-position house lock (boom over front, rear or sides) operated from the operator's cab

## Counterweight

Consists of a six piece design.

- One "A" counterweight, 19,000 lb (8 618kg)
- One "B" counterweight, 16,000 lb (7 257kg)
- One "C" counterweight, 16,000 lb (7 257kg)
- One "D" counterweight, 6,000 lb (2 721kg)
- Two "A" carbody counterweights, 12,500 lb (5 670kg) each

## Operator's Cab

Fully enclosed modular steel compartment is independently mounted and padded to protect against vibration and noise. Tilting cab 0–20°

- All tinted/tempered safety glass
- Sliding entry door and front and rear window
- Swing up roof window with windshield wiper
- Door and window locks
- Hot water heater
- Air conditioner
- Sun visor
- Cloth seat
- Circulating fan
- Front windshield and top hatch wipers and washers
- Dry chemical fire extinguisher
- Engine instrumentation panel (tachometer, voltmeter, engine oil pressure, engine water temperature, fuel level, hydraulic oil temperature, hour meter, and service monitor system)
- Mechanical drum rotation indicators for main (rear) and auxiliary (front) hoist drums
- Six way adjustable seat
- Foot throttle
- Single axis pilot operated controls
  - Optional Joystick controls
- Fully adjustable single axis controls
- Bubble type level
- Ergonomic gauge layout
- Controls shut off lever
- AM/FM Radio
- Travel levers & pedals
- Monitor for rear view and winch cameras
- Amber strobe beacon mounted on top of cab

## Rated Capacity Limiter System

**Link–Belt Pulse** – The Link–Belt in–house designed, total crane operating system that utilizes the display as a readout and operator interface for the following systems:

- Crane configuration
- Boom length
- Boom head height
- Allowed load and % of allowed load
- Data logging
- Boom angle
- Radius of load
- Actual load
- Ground bearing pressures (simulated and real time)
- Electronic level indicator
- Operator settable alarms (include):
  - Maximum and minimum boom angles
  - Maximum tip height
  - Maximum boom length
  - Swing left/right positions
  - Operator defined area (imaginary plane)
- External bar graph indicator
- Optional internal bar graph indicator

**Telematics** – Cellular–based data logging and monitoring system that provides:

- Location and operational settings
- Routine maintenance
- Crane and engine monitoring
- Diagnostic and fault codes

## Machinery House

Hinged doors (four on right side, one on left side) for machinery access. Upper left side guard rails.

- Upper centralized grease bank
- Centralized hydraulic pressure ports
- 360 degree remote controlled high intensity boom floodlight

## Catwalks

Standard on right and left sides. Catwalks fold up and pin for reduced travel width.

## Optional

- 360 degree rotating beacon to replace amber strobe
- Wireless remote to remotely control crane functions

# Lower Structure

## Carbody

### Lower Frame

All welded box construction frame with precision machined surfaces for turntable bearing and axles beams.

Extendable & retractable axle beam controlled by a hydraulic cylinder mounted inside the beams.

- Lower centralized grease bank

## Side Frames

### Side Frames

All welded, precision machined, steel frames can be extended and retracted with hydraulic cylinders.

- 15 ft 2.2 in (4.63m) extended gauge
- 12 ft 8.7 in (3.88m) intermediate gauge
- 8 ft 11.6 in (2.73m) retracted gauge
- 23 ft 4.2 in (7.11m) overall length
- 36 in (0.91m) wide track shoes
- Sealed (oil filled) idler and drive planetaries
- 2 speed travel drives
- Hydraulic self adjusting tracks

### Track Rollers

- Eleven sealed (oil filled) bottom track rollers per side frame
- Three sealed (oil filled) top track rollers per side frame
- Heat treated, mounted on anti–friction bearings

### Tracks

Heat treated, self–cleaning grouser shoes and heat treated track pins. 65 track shoes per side.

- Optional flat steel or “street” pad
- Optional rubber clamp on pads

### Take Up Idlers

Cast steel, heat treated, self–cleaning, mounted on sealed tapered roller bearings

## Travel and Steering

Each side frame contains a pilot controlled, bi–directional, axial piston motor and a planetary gear reduction unit to provide positive control under all load conditions.

- 2–speed travel
- Individual control provides smooth, precise maneuverability including full counter–rotation.

- Spring applied, hydraulically released multiple wet–disc type brake controlled automatically
- Maximum travel speed is 2 mph (3.2km/h)
- Designed to 40% gradeability

## Jack System

System contains four hydraulic cylinders individually mounted on swing–out beams.

- Individual jack cylinders are operated by remote control, or can be operated by carbody–mounted controls.
- Minimum height of carbody when resting on pontoons is 14.7 in (37.4cm).
- Maximum height of carbody with jack fully extended is 45.5 in (115.6cm).

## Optional Tool Boxes

Two heavy duty steel design tool boxes that bolt onto the carbody counterweights.

# Boom

## Design

Six section, formed construction of extra high tensile steel consisting of one base section and five telescoping sections. The two plate design of each section has multiple longitudinal bends for superior strength. Each telescoping section extends independently by means of one double-acting, single stage hydraulic cylinder with integral holding valves.

## Boom

- 42.4–195.4 ft (12.9–59.5m) six section boom
- Five boom extend modes (EM1 through EM5), controlled from the operator's cab, provide superior capacities by varying the extension of the telescoping sections:
  - EM1 extends to 195.4 ft (59.5m)
  - EM2 extends to 180.4 ft (54.9m)
  - EM3 extends to 154.9 ft (47.2m)
  - EM4 extends to 129.4 ft (39.4m)
  - EM5 extends to 103.6 ft (31.5m)
- Mechanical boom angle indicator
- Wind speed indicator
- Maximum tip height for each extend mode is:
  - EM1 is 203 ft (61.9m)
  - EM2 is 188 ft (57.3m)
  - EM3 is 163 ft (51.2m)
  - EM4 is 138 ft (42.1m)
  - EM5 is 112 ft (34.1m)
- 360 remote controlled high intensity boom floodlight mounted on boom base section

## Boom Wear Pads

- Wear pads with Teflon inserts that self-lubricate the boom sections
- Bottom wear pads are universal for T2–T5 telescoping boom sections
- Bottom wear pads are universal for the boom base section and T1 boom section
- Top wear pads are universal for all boom sections

## Boom Head

- Six 16.38 in (41.6cm) root diameter nylon sheaves to handle up to 12 parts of line
- Single 16.5 in (41.9m) root diameter nylon auxiliary lifting sheave
- Does not affect erection of the fly or use of the main head sheaves
- Easily removable wire rope guards
- Rope dead end lugs on each side of the boom head
- Boom head is designed for quick-reeve of the hook block

## Boom Elevation

- One double acting hydraulic cylinder with integral holding valve
- Boom elevation:  $-2.5^{\circ}$  to  $81^{\circ}$

# Optional Equipment

## Hook Blocks And Balls

- 35 ton (31.8mt) 1 sheave quick-reeve hook block with safety latch
- 50 ton (45.4mt) 4 sheave quick-reeve hook block with safety latch
- 80 ton (72.6mt) 5 sheave quick-reeve hook block with safety latch
- 100 ton (90.7mt) 6 sheave quick-reeve hook block with safety latch
- 140 ton (127mt) 7 sheave quick-reeve hook block with safety latch
- 12 ton (10.9mt) swivel and non-swivel hook balls with safety latch

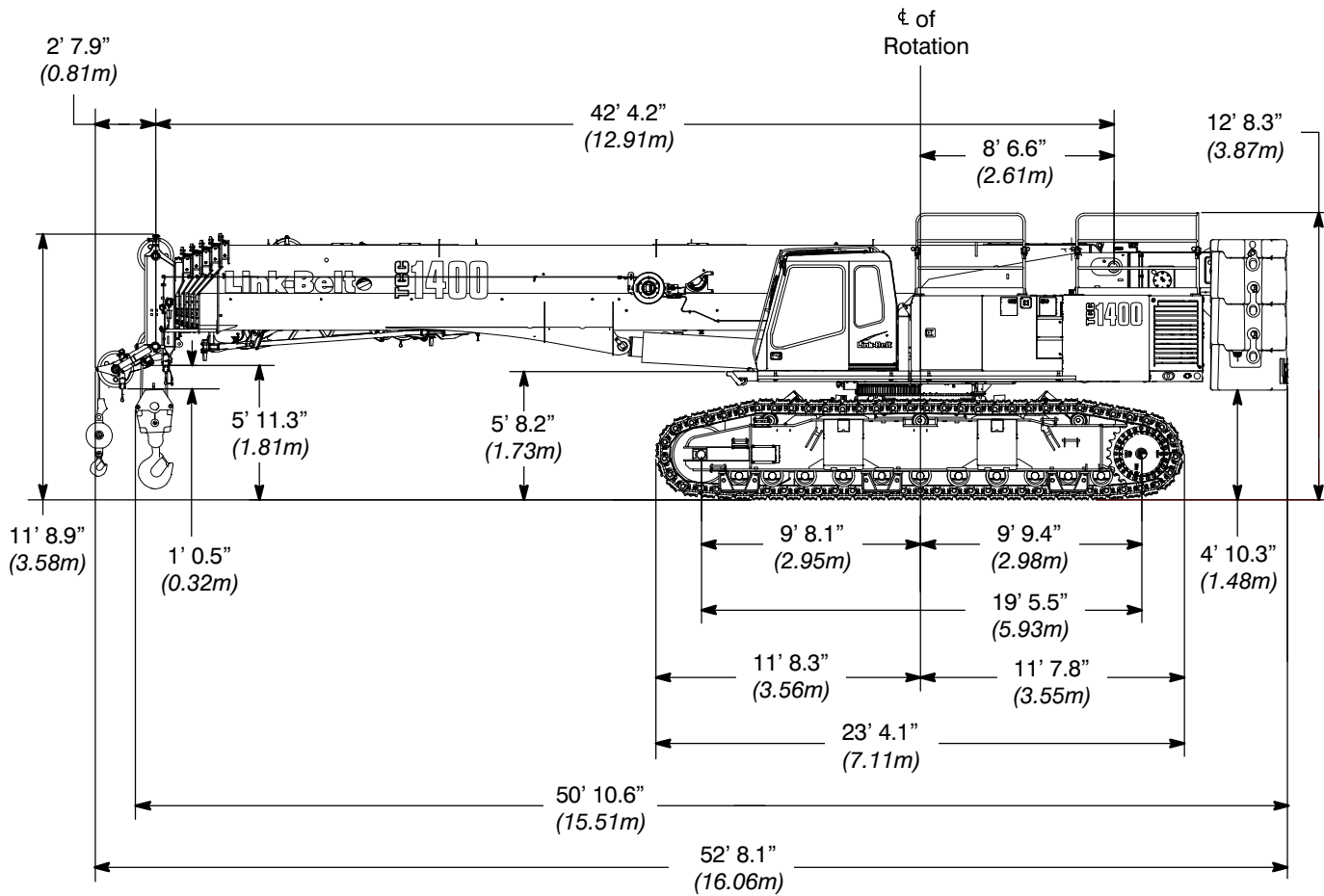
## Fly & Attachments

- 10 ft (3.0m) lattice fly, stowable, offsettable to  $0^{\circ}$ ,  $15^{\circ}$ ,  $30^{\circ}$ , and  $45^{\circ}$ . Maximum tip height is 211' 6" (64.5m).
- 10–31 ft (3.0–9.4m) two piece lattice fly, stowable, offsettable to  $0^{\circ}$ ,  $15^{\circ}$ ,  $30^{\circ}$ , and  $45^{\circ}$ . Maximum tip height is 231' 11" (70.7m).
- 10–31–55 ft (3.0–9.4–16.8m) three piece bi-fold lattice fly, stowable, offsettable to  $0^{\circ}$ ,  $15^{\circ}$ ,  $30^{\circ}$ , and  $45^{\circ}$ . Maximum tip height is 257' 7" (78.5m).

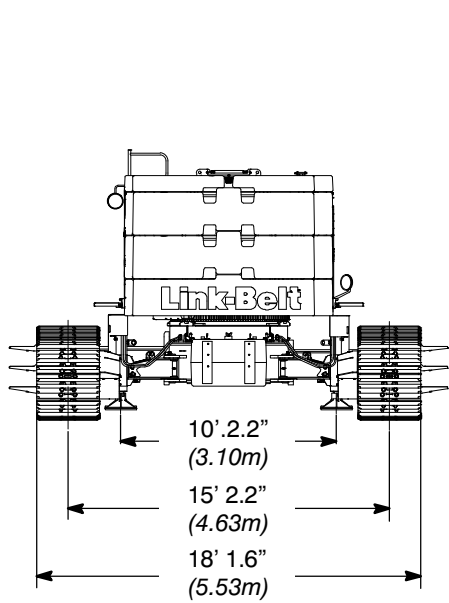
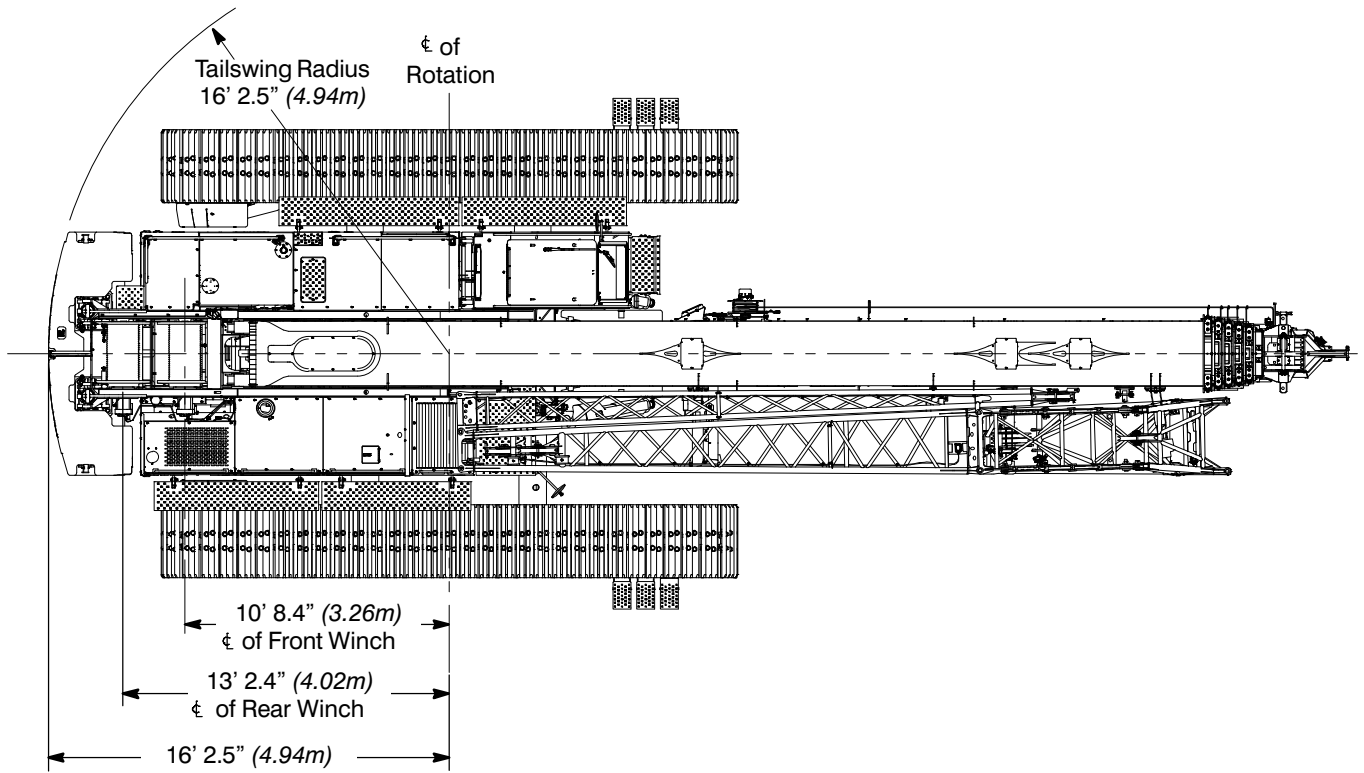
# Dimensions

## Base Crane

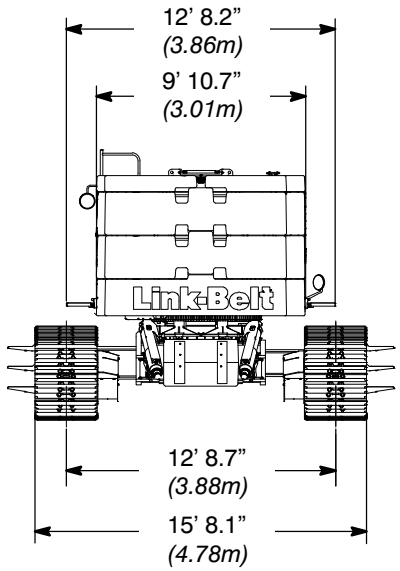
General Dimensions	English	Metric
Basic Boom	42.4–195.4 ft	12.92–59.56m
Minimum Load Radius	8 ft	2.44m
Maximum Boom Angle	81°	81°
Track Shoe Width	36 in	0.91m



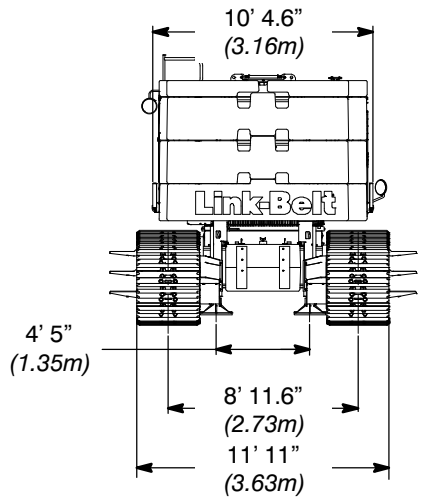




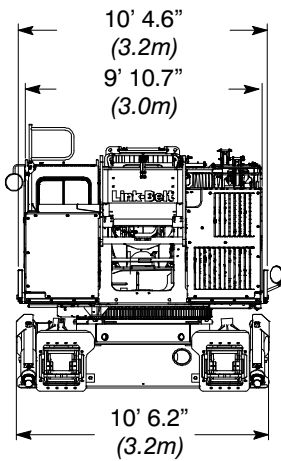
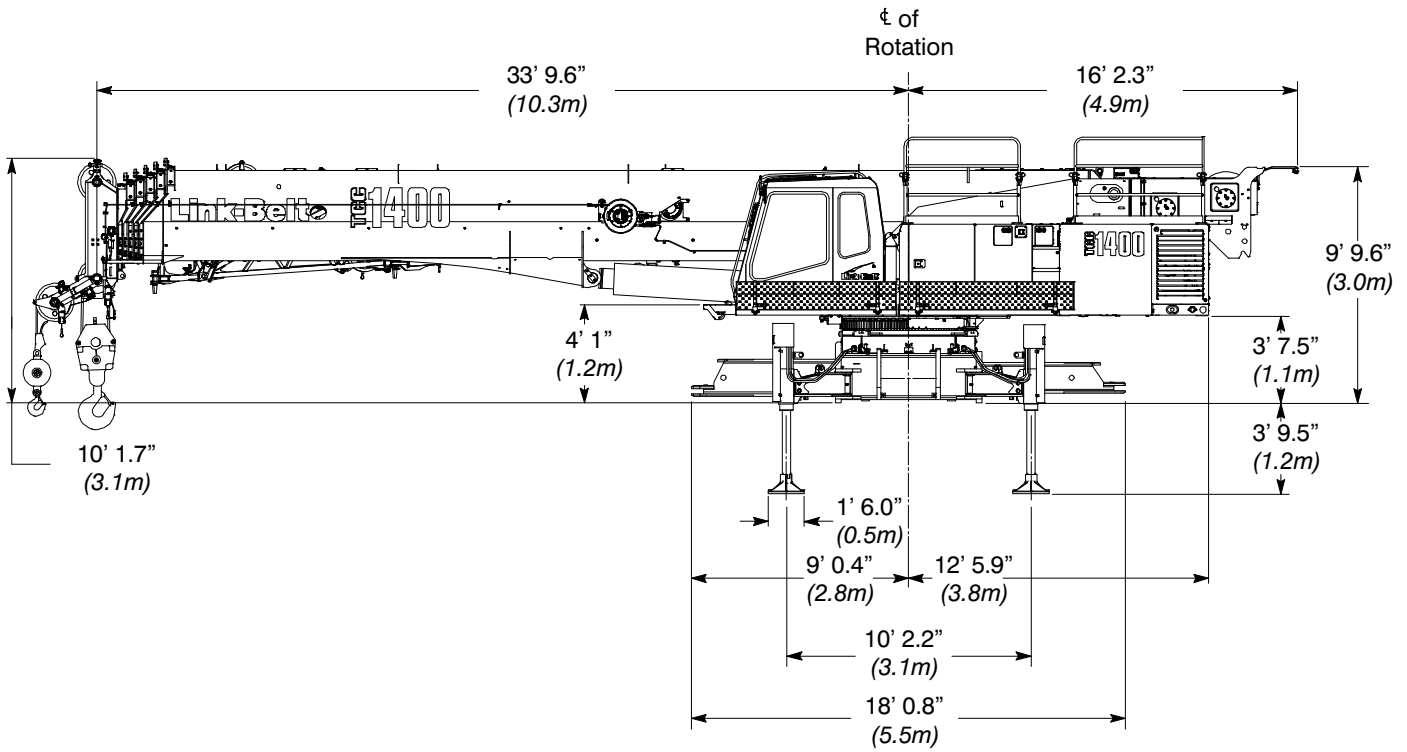
**Extended Gauge**



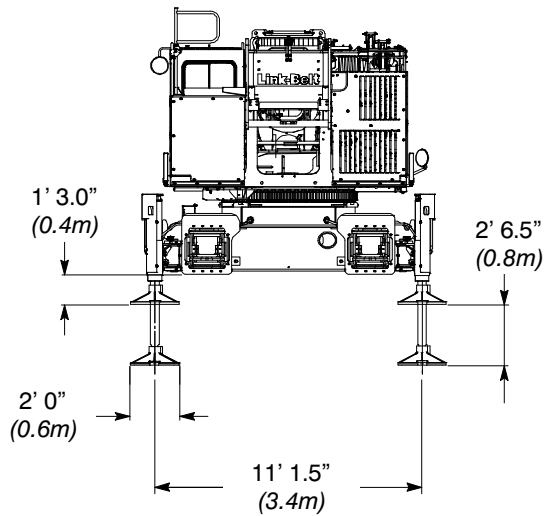
**Intermediate Gauge**



**Retracted Gauge**



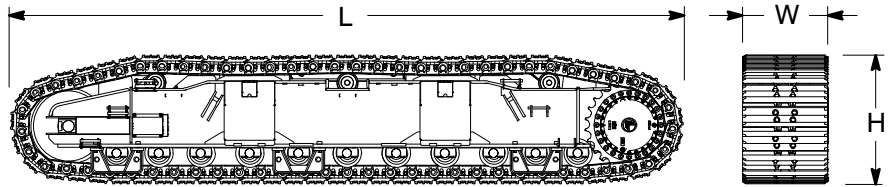
Jacks In Transport Position  
Side Frames Removed  
Upper Counterweight Removed  
Lower Counterweight Removed



# Side Frames

## Side Frames ②

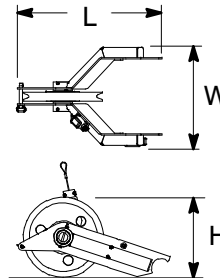
Length	280.06 in	(7.11m)
Width	35.43 in	(0.90m)
Height	53.50 in	(1.36m)
Weight	28,750 lb	(13 041kg)



# Auxiliary Lifting Sheave

## Auxiliary Lifting Sheave ①

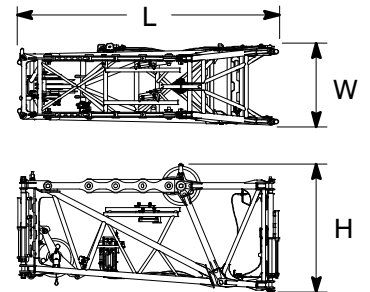
Length	11.28 in	(0.29m)
Width	5.59 in	(0.14m)
Height	4.75 in	(0.12m)
Weight	120 lb	(54kg)



# Fly

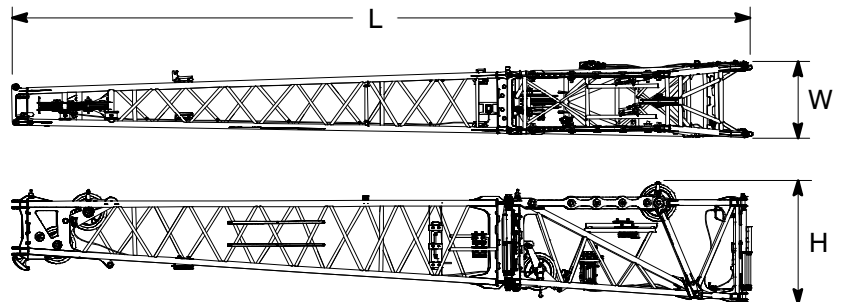
## 10 ft (3.0m) Fly Base ①

Length	10.59 ft	(3.23m)
Width	39.43 in	(1.00m)
Height	61.77 in	(1.57m)
Weight	1552 lb	(704kg)



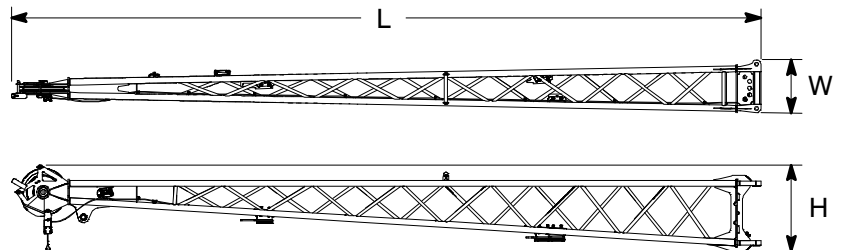
## 10–31 ft (3.0–9.4m) Two Piece Fly Base And Center ①

Length	31.95 ft	(9.7m)
Width	39.43 in	(1.0m)
Height	61.77 in	(1.57m)
Weight	2,755 lb	(1 249.6kg)



## 24 ft (7.3) Fly Tip (Addition To Fly Base And Center For 10–31–55 ft (3.0–9.4–16.7m) Bi-fold Fly) ①

Length	25.22 ft	(7.69m)
Width	30.38 in	(0.77m)
Height	34.66 in	(0.88m)
Weight	703.7 lb	(319.2kg)



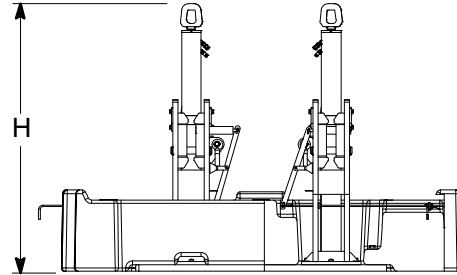
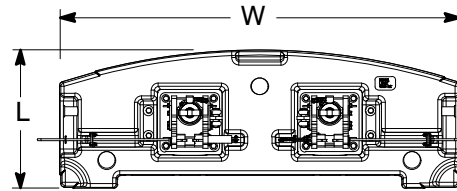
Number inside black circle "①" = # of components

\* – Optional equipment

# Counterweights

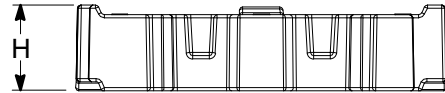
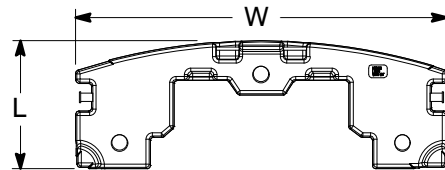
## “A” Counterweight ①

Length	40.64 in	(1.03m)
Width	9 ft 10 in	(3.00m)
Height	6 ft 7.0 in	(2.00m)
Weight	19,000 lb	(8 618kg)



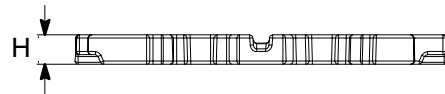
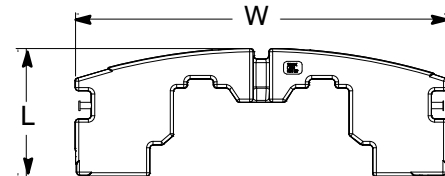
## “B” & “C” Counterweights ②

Length	40.7 in	(1.03m)
Width	9 ft 10 in	(3.00m)
Height	27.20 in	(0.69m)
Weight	16,000 lb	(7 257kg)



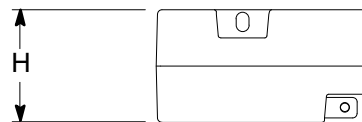
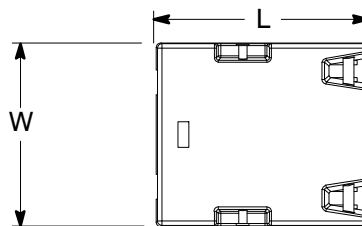
## “D” Counterweight ①

Length	40.7 in	(1.03m)
Width	9 ft 10 in	(3.00m)
Height	9.3 in	(0.24m)
Weight	6,000 lb	(2 721kg)



## “A” Carbody Counterweights ②

Length	49.0 in	(1.24m)
Width	42.5 in	(1.08m)
Height	26.0 in	(0.66m)
Weight	12,500 lb	(5 670kg)



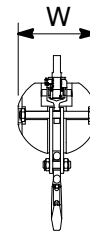
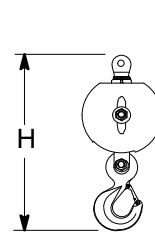
Number inside black circle “①” = # of components

\* – Optional equipment

# Hook Balls

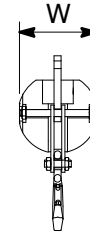
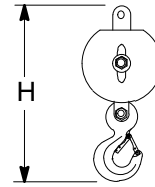
## 12 Ton (10.9mt) Swivel Hook Ball\* ①

Width	17.93 in	(0.46m)
Height	36.26 in	(0.92m)
Weight	722 lb	(327kg)



## 12 Ton (10.9mt) Non-Swivel Hook Ball\* ①

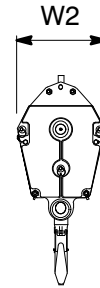
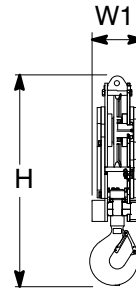
Width	17.93 in	(0.46m)
Height	36.26 in	(0.92m)
Weight	722 lb	(327kg)



# Hook Blocks

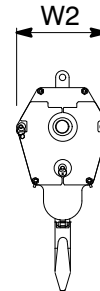
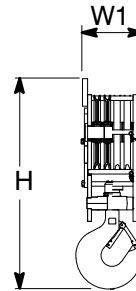
## 35 Ton (31.8mt) 1–Sheave Hook Block\* ①

Width1	11.19 in	(0.28m)
Width2	23.88 in	(0.61m)
Height	57.31 in	(1.46m)
Weight	1,100 lb	(499kg)



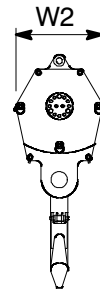
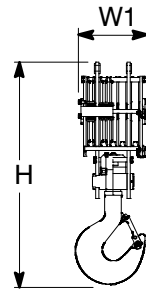
## 50 Ton (45.4mt) 4–Sheave Hook Block\* ①

Width1	15.81 in	(0.40m)
Width2	24 in	(0.61m)
Height	57.35 in	(1.46m)
Weight	1,195 lb	(542kg)



## 80 Ton (72.6mt) 5–Sheave Hook Block\* ①

Width1	20 in	(0.51m)
Width2	24 in	(0.61m)
Height	64.56 in	(1.64m)
Weight	1,411 lb	(640kg)

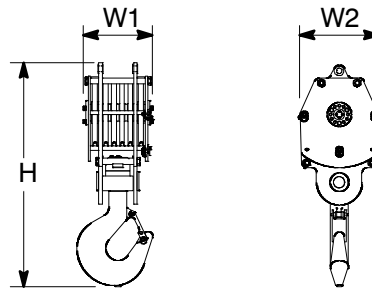


Number inside black circle “①” = # of components

\* – Optional equipment

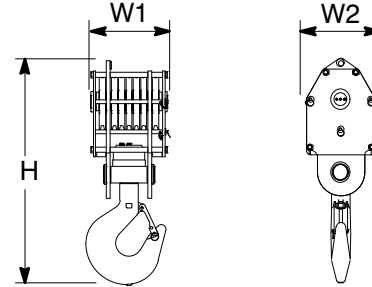
**100 Ton (90.7mt)**  
**6–Sheave Hook Block\* ①**

Width1	20.94 in	(0.53m)
Width2	24 in	(0.61m)
Height	67.61 in	(1.72m)
Weight	1,750 lb	(794kg)



**140 Ton (127.0mt)**  
**7–Sheave Hook Block\* ①**

Width1	23.10 in	(0.54m)
Width2	22.25 in	(0.57m)
Height	72.28 in	(1.84m)
Weight	2,850 lb	(1 292kg)



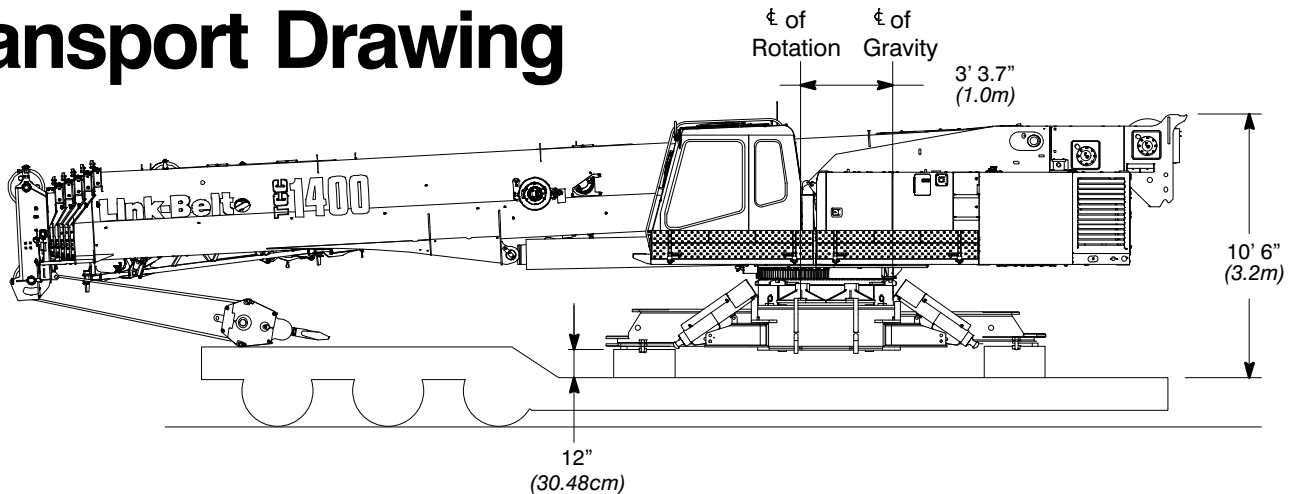
Number inside black circle “①” = # of components  
 \* – Optional equipment

# Working Weights

Option	Description	Gross Weight lb (kg)	Ground Bearing Pressure (on soft ground) psi (kg/cm <sup>2</sup> )
1	Base crane, "ABCD" counterweight, 2 piece carbody counterweight, 900 ft (274.3m) type "ZB" main wire rope, 600 ft (182.9m) type "ZB" auxiliary wire rope, 2-piece fly, 80 ton (72.6mt) 5 sheave hook block, and 12 ton (10.89mt) hook ball. and a 200 lb (90.7kg) operator.	233,300 (105 823kg)	13.94 (0.98)

Notes: Ground bearing pressure is based on the total weight distributed evenly over the track contact area.

# Transport Drawing



**Transport Weight – 93,600 lb (42 456kg)**

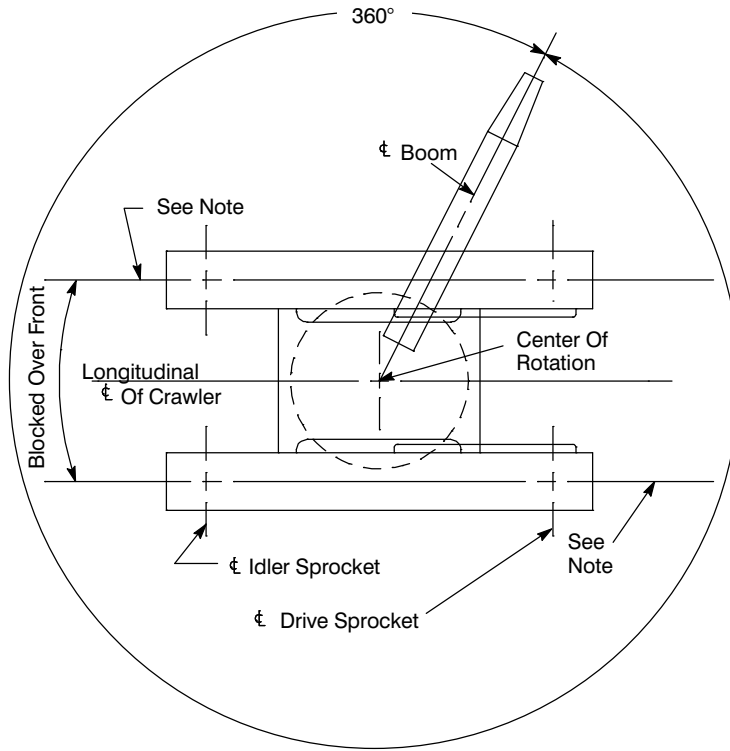
Base crane, 900 ft (274.32m) type "ZB" main wire rope, 600 ft (182.88m) type "ZB" auxiliary wire rope, 2-piece fly, 80 ton (72.6mt) 5 sheave hook block, and 12 ton (10.89mt) hook ball

# Load Hoist Performance

Main (Rear) and Auxiliary (Front) Winches – 7/8 in (22mm) Rope										
Layer	Maximum Line Pull		Normal Line Speed		High Line Speed		Layer		Total	
	lb	kg	ft/min	m/min	ft/min	m/min	ft	m	ft	m
1	22,380	10,151.4	174	53.0	348	106.1	125	38.1	125	38.1
2	20,194	9,159.8	193	58.8	386	117.7	138	42.1	263	80.2
3	18,397	8,344.7	212	64.6	424	129.2	152	46.3	415	126.5
4	16,893	7,662.5	230	70.1	461	140.5	165	50.3	580	176.8
5	15,617	7,083.8	249	75.9	499	152.1	179	54.6	758	231.0
6	14,520	6,586.2	268	81.7	537	163.7	192	58.5	951	289.9

Wire Rope Application		Diameter		Type	Maximum Permissible Load	
		in	mm		lb	kg
Main (Rear) Winch	Standard	7/8	22	36x7 rotation resistant – right regular lay or right lang lay (Type ZB)	20,920	9 489.2
	Optional	7/8	22	18x19 rotation resistant – right regular lay or right lang lay (Type RB)	17,520	7 946.9
Auxiliary (Front) Winch	Standard	7/8	22	36x7 rotation resistant – right regular lay (Type ZB)	20,920	9 989.2
	Optional	7/8	22	18x19 rotation resistant – right regular lay (Type RB)	17,520	7 946.9

# Working Areas



**Note:** These Lines Determine The Limiting Position Of Any Load For Operation Within Working Areas Indicated.



# Boom Extend Modes

Boom Length		Telescope Length				
ft	m	T5	T4	T3	T2	T1
42.3	12.88					
55	16.8	44%				
70	21.3	96%				
85	25.9	100%	46%			
100	30.5	100%	97%			
115	35.1	100%	100%	46%		
130	39.6	100%	100%	95%		
145	44.2	100%	100%	100%	43%	
160	48.8	100%	100%	100%	90%	
175	53.3	100%	100%	100%	100%	37%
185	56.4	100%	100%	100%	100%	68%
195.4	59.52	100%	100%	100%	100%	100%

Boom Length		Telescope Length				
ft	m	T5	T4	T3	T2	T1
42.3	12.88					
55	16.8	44%				
70	21.3	90%	6%			
85	25.9	90%	57%			
100	30.5	90%	90%	17%		
115	35.1	90%	90%	66%		
130	39.6	90%	90%	90%	24%	
145	44.2	90%	90%	90%	71%	
160	48.8	90%	90%	90%	90%	28%
170	51.8	90%	90%	90%	90%	59%
180.3	54.94	90%	90%	90%	90%	91%

Boom Length		Telescope Length				
ft	m	T5	T4	T3	T2	T1
42.3	12.88					
55	16.8	44%				
70	21.3	46%	47%	1%		
85	25.9	46%	47%	50%		
100	30.5	46%	47%	90%	9%	
115	35.1	46%	47%	90%	457%	
130	39.6	46%	47%	90%	90%	13%
145	44.2	46%	47%	90%	90%	60%
155	47.23	46%	47%	90%	90%	91%

Boom Length		Telescope Length				
ft	m	T5	T4	T3	T2	T1
42.3	12.88					
55	16.8	44%				
70	21.3	46%	47%	1%		
85	25.9	46%	47%	49%	2%	
100	30.5	46%	47%	49%	49%	
115	35.1	46%	47%	49%	50%	46%
129.6	39.49	46%	47%	49%	50%	91%

Boom Length		Telescope Length				
ft	m	T5	T4	T3	T2	T1
42.3	12.88					
56.4	17.18	0%	47%			
71.3	21.72	0%	47%	49%		
87.1	26.53	0%	47%	49%	50%	
103.7	31.61	0%	47%	49%	50%	51%

**EM 1**

42.3 ft (12.88m) Base

Extend ←

195.4 ft (59.52m)

T5 T4 T3 T2 T1 Base

**EM 2**

42.3 ft (12.88m) Base

Extend ←

180.3 ft (54.94m)

T5 T4 T3 T2 T1 Base

**EM 3**

42.3 ft (12.88m) Base

Extend ←

155.0 ft (47.23m)

T5 T4 T3 T2 T1 Base

**EM 4**

42.3 ft (12.88m) Base

Extend ←

129.6 ft (39.49m)

T5 T4 T3 T2 T1 Base

**EM 5**

FIXED

42.3 ft (12.88m) Base

Extend ←

103.7 ft (31.61m)

T4 T3 T2 T1 Base

**EM 5**

FIXED

42.3 ft (12.88m) Base

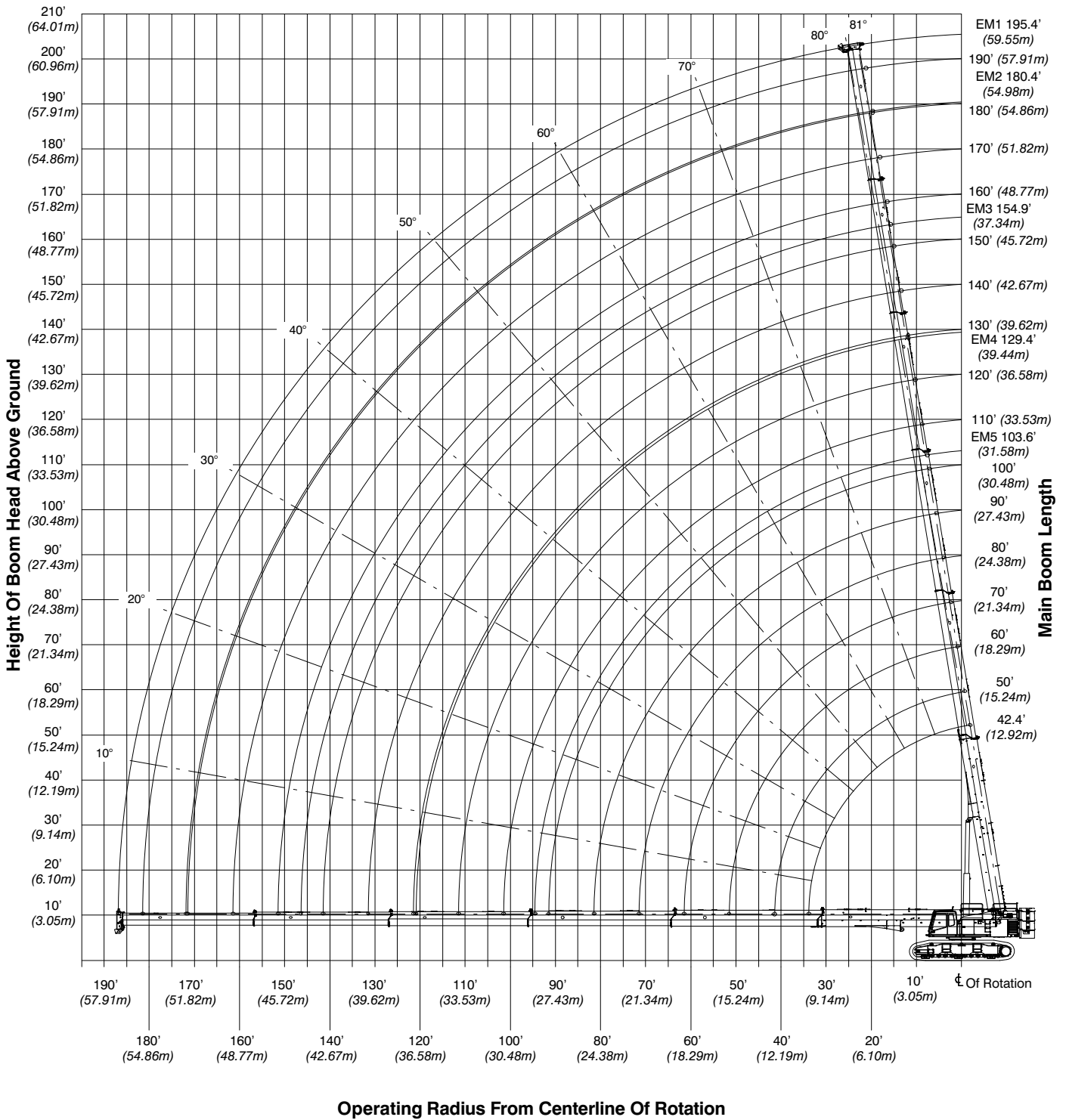
Extend ←

103.7 ft (31.61m)

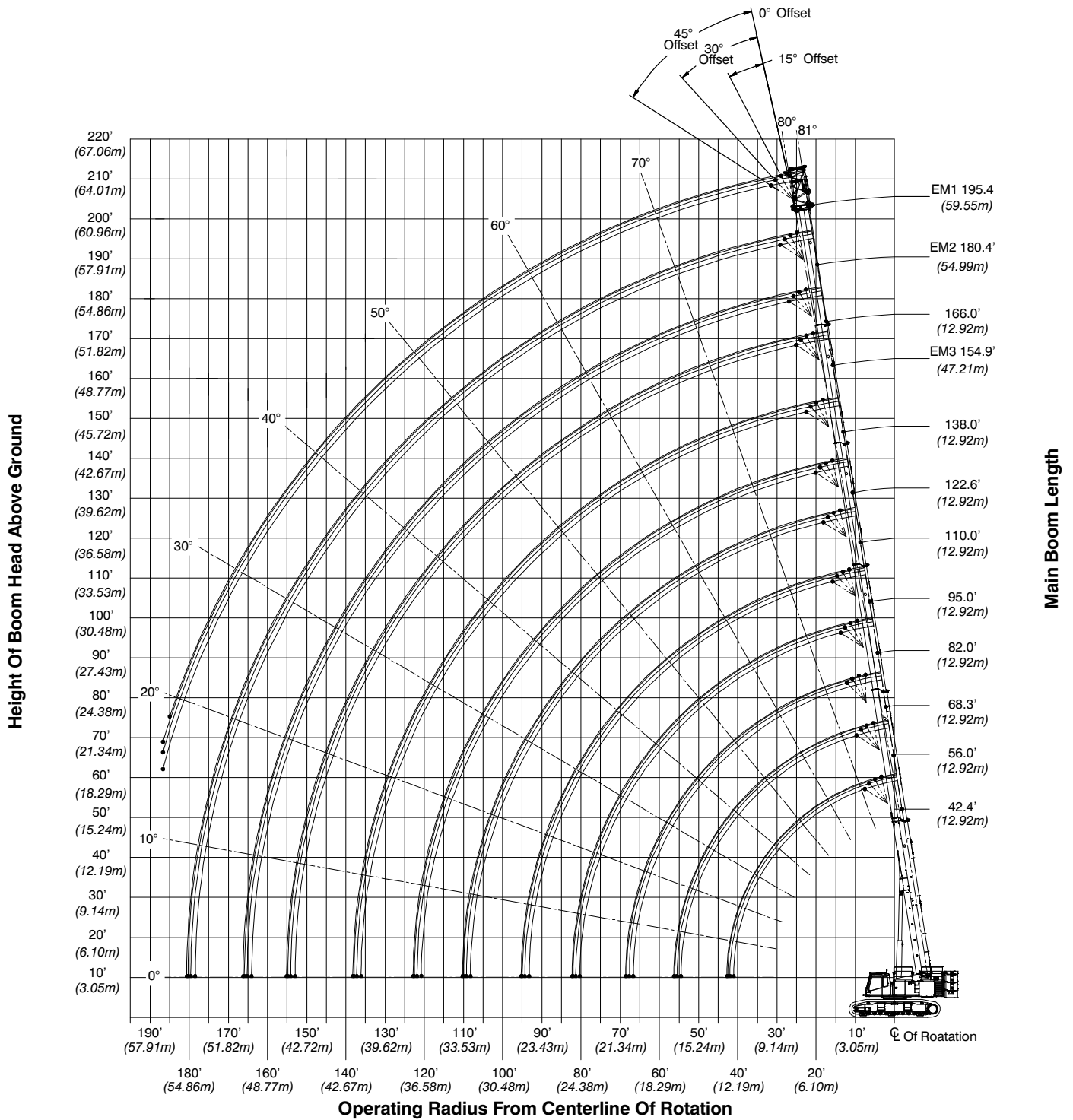
T4 T3 T2 T1 Base

# Working Range Diagrams

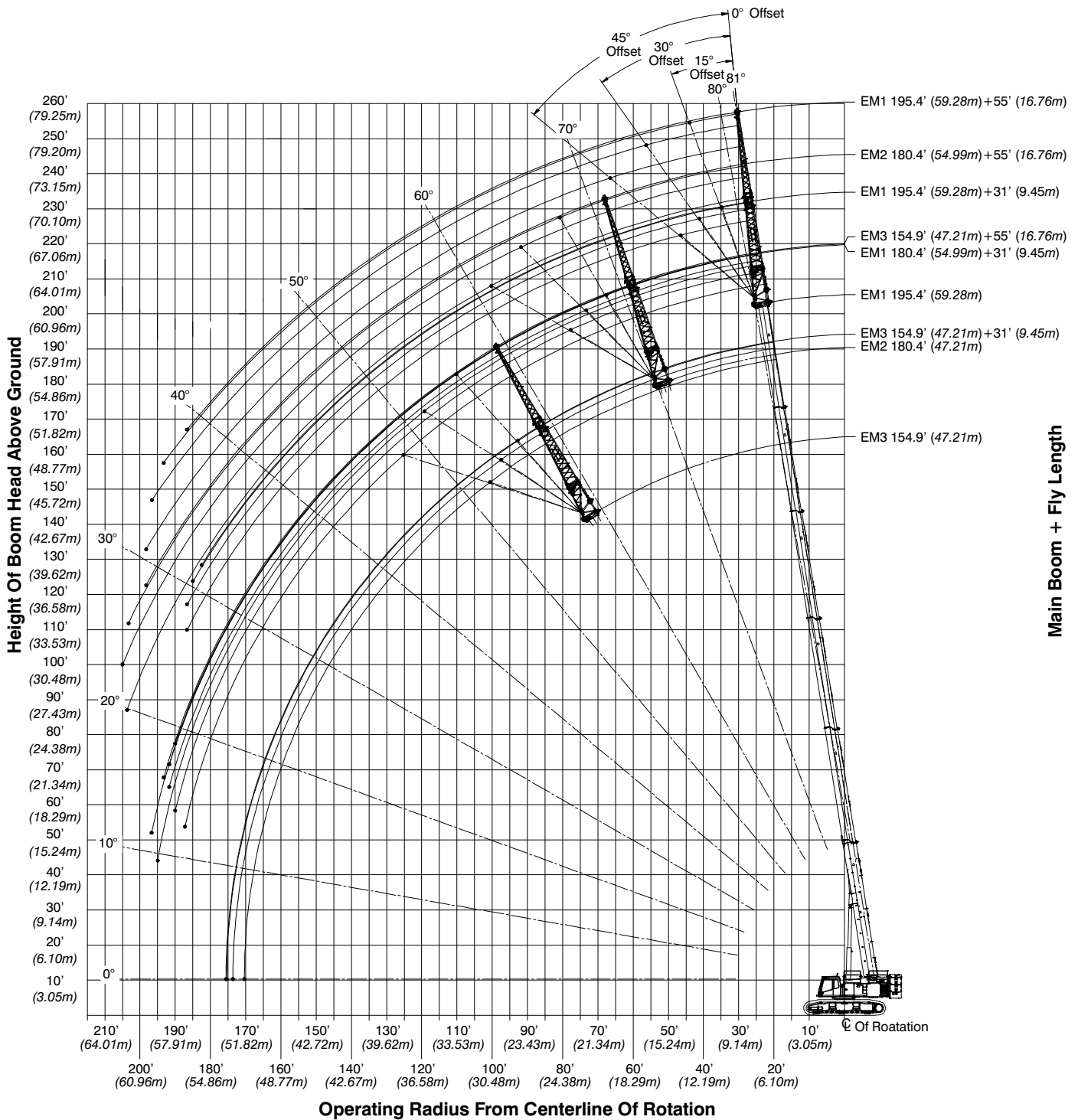
## Main Boom



# 195.4' Main Boom + 10' Fly



# 180' Main Boom + 10, 31–55' Fly



# Main Boom Load Charts – Standard

Main Boom Lift Capacity Chart - 360° Rotation - Fully Extended Tracks ABCD+A [82,000lb (37 194kg) Counterweight] [All capacities are listed in lbs]												
Load Radius (ft)	Main Boom - EM1 Boom Mode											Load Radius (ft)
	Boom Length - ft											
	42	56	71	86	101	116	132	147	163	179	195	
8	280,000											8
9	270,700											9
10	259,500	81,300	61,800									10
12	227,100	81,300	61,800									12
15	181,800	81,300	61,800	79,000								15
20	134,700	81,300	61,800	70,000	50,900	38,500						20
25	104,000	81,300	61,800	62,000	50,900	38,500	32,500					25
30	77,100	81,300	59,500	55,500	46,100	38,500	32,500	30,500	26,700			30
35		64,300	53,900	50,100	41,700	38,500	32,500	30,500	26,700	24,900		35
40		52,400	48,300	45,700	38,000	38,500	32,500	30,500	26,700	24,900	21,500	40
45		43,900	43,700	41,900	34,900	35,600	31,600	30,500	26,700	24,900	21,500	45
50			39,600	38,700	32,200	32,900	29,200	29,500	26,700	24,900	21,500	50
55			34,400	35,100	29,800	30,500	27,000	27,400	24,900	24,900	21,500	55
60			30,200	31,000	27,800	28,400	25,100	25,400	23,100	24,700	21,500	60
65				27,500	26,000	26,500	23,400	23,700	21,500	23,100	21,500	65
70				24,600	24,400	24,900	21,900	22,200	20,000	21,600	21,500	70
75				22,100	22,600	22,500	20,500	20,700	18,700	20,200	20,200	75
80					20,500	20,400	19,300	19,500	17,500	18,700	18,100	80
85					18,600	18,500	18,200	18,000	16,400	17,200	16,500	85
90					17,100	17,000	17,000	16,000	15,400	15,500	14,900	90
95						15,600	15,500	15,100	14,500	14,100	13,500	95
100						14,300	14,200	13,800	13,500	12,800	12,200	100
105						13,100	13,100	12,700	12,300	11,700	11,100	105
110							12,000	11,600	11,300	10,600	10,100	110
115							11,100	10,700	10,300	9,700	9,100	115
120							10,200	9,800	9,500	8,800	8,300	120
125								9,000	8,700	8,000	7,500	125
130								8,300	8,000	7,300	6,800	130
135								7,700	7,300	6,700	6,100	135
140									6,700	6,100	5,500	140
145									6,200	5,500	4,900	145
150									5,600	5,000	4,400	150
155										4,500	3,900	155
160										4,000	3,500	160
165										3,600	3,100	165
170										3,300	2,700	170
175											2,300	175
180											2,000	180
185											1,700	185

This material is supplied for reference use only. Operator must refer to in-cab Crane Rating Manual and Operator's Manual to determine allowable crane lifting capacities and assembly and operating procedures.

<b>Main Boom Lift Capacity Chart - 360° Rotation - Fully Extended Tracks</b>												
<b>ABCD+A [82,000lb (37 194kg) Counterweight]</b>												
<b>[All capacities are listed in lbs]</b>												
<b>Load Radius (ft)</b>	<b>Main Boom - EM2 Boom Mode</b>											<b>Load Radius (ft)</b>
	<b>Boom Length - ft</b>											
	<b>42.4</b>	<b>56.0</b>	<b>68.3</b>	<b>82.0</b>	<b>95.0</b>	<b>110.0</b>	<b>122.6</b>	<b>138.0</b>	<b>151.1</b>	<b>166.0</b>	<b>180.4</b>	
8	280,000											8
9	270,700											9
10	259,500	81,300	75,900									10
12	227,100	81,300	75,900									12
15	181,800	81,300	75,900	82,900								15
20	134,700	81,300	75,900	74,300	60,100	48,100						20
25	104,000	81,300	71,200	65,600	54,800	48,100	37,700					25
30	77,100	81,300	63,800	58,800	49,100	48,100	37,700	35,900	32,000			30
35		64,300	57,800	53,100	44,400	44,500	37,700	35,900	32,000	30,400	26,400	35
40		52,400	52,900	48,400	40,500	40,600	36,600	35,900	32,000	30,400	26,400	40
45		43,900	45,900	44,400	37,100	37,300	33,600	33,600	31,000	30,400	26,400	45
50			39,200	40,100	34,300	34,500	31,000	31,000	28,500	30,300	26,400	50
55			34,100	34,800	31,800	31,900	28,700	28,700	26,400	28,200	26,400	55
60				30,700	29,600	29,700	26,700	26,700	24,500	26,200	26,400	60
65				27,200	27,700	27,700	24,900	24,900	22,700	24,500	25,500	65
70				24,300	24,800	24,800	23,300	23,200	21,200	23,000	22,600	70
75					22,300	22,300	21,800	21,800	19,800	20,800	20,200	75
80					20,200	20,200	20,100	19,700	18,600	18,700	18,100	80
85					18,400	18,300	18,300	17,800	17,400	17,000	16,500	85
90						16,800	16,800	16,400	16,100	15,400	14,900	90
95						15,300	15,300	14,900	14,600	14,000	13,400	95
100						14,100	14,000	13,600	13,300	12,700	12,200	100
105							12,900	12,500	12,200	11,500	11,000	105
110							11,800	11,400	11,100	10,500	10,000	110
115								10,500	10,200	9,600	9,000	115
120								9,600	9,300	8,700	8,200	120
125								8,900	8,600	7,900	7,400	125
130									7,900	7,200	6,700	130
135									7,200	6,500	6,000	135
140									6,600	5,900	5,400	140
145										4,900	4,900	145
150										4,400	4,300	150
155											3,900	155
160											3,400	160
165											3,000	165
170											2,600	170

This material is supplied for reference use only. Operator must refer to in-cab Crane Rating Manual and Operator's Manual to determine allowable crane lifting capacities and assembly and operating procedures.

<b>Main Boom Lift Capacity Chart - 360° Rotation - Fully Extended Tracks ABCD+A [82,000lb (37 194kg) Counterweight] [All capacities are listed in lbs]</b>										
<b>Load Radius (ft)</b>	<b>Main Boom - EM3 Boom Mode</b>									<b>Load Radius (ft)</b>
	<b>Boom Length - ft</b>									
	<b>42.4</b>	<b>55.5</b>	<b>69.5</b>	<b>84.0</b>	<b>97.1</b>	<b>112.0</b>	<b>125.6</b>	<b>141.0</b>	<b>154.9</b>	
8	280,000									8
9	270,700									9
10	259,500	81,200	80,700							10
12	227,100	81,200	80,700							12
15	181,800	81,200	80,700	79,700						15
20	134,700	81,200	80,700	79,700	70,800	65,500				20
25	104,000	81,200	80,700	79,700	62,500	59,700	53,300			25
30	77,100	81,200	80,700	79,700	55,800	53,400	47,700	50,000	38,800	30
35		64,200	65,900	66,100	50,300	48,100	43,000	45,500	38,800	35
40		52,300	53,900	54,200	45,700	43,700	39,000	41,500	38,800	40
45		43,800	45,300	45,700	41,800	40,000	35,600	38,200	38,800	45
50			38,700	39,100	38,500	36,800	32,700	35,800	36,500	50
55			33,600	33,900	34,200	33,800	30,100	32,700	32,000	55
60			29,400	29,700	29,900	29,600	27,900	28,500	27,900	60
65				26,300	26,500	26,100	25,900	25,100	24,500	65
70				23,400	23,500	23,200	23,000	22,200	21,600	70
75				20,900	21,100	20,700	20,500	19,700	19,200	75
80					18,900	18,600	18,400	17,600	17,100	80
85					17,200	16,900	16,700	15,900	15,500	85
90						15,200	15,000	14,300	13,900	90
95						13,800	13,600	12,900	12,400	95
100						12,500	12,300	11,600	11,100	100
105							11,200	10,400	10,000	105
110							10,100	9,400	9,000	110
115							9,200	8,500	8,000	115
120								7,600	7,200	120
125								6,800	6,400	125
130								6,100	5,700	130
135									5,100	135
140									4,500	140
145									3,900	145

This material is supplied for reference use only. Operator must refer to in-cab Crane Rating Manual and Operator's Manual to determine allowable crane lifting capacities and assembly and operating procedures.

**Main Boom Lift Capacity Chart - 360° Rotation - Fully Extended Tracks  
ABCD+A [82,000lb (37 194kg) Counterweight]  
[All capacities are listed in lbs]**

Load Radius (ft)	Main Boom - EM4 Boom Mode							Load Radius (ft)
	Boom Length - ft							
	42.4	55.5	69.5	84.4	100.1	116.0	129.4	
8	280,000							8
9	270,700							9
10	259,500	81,200	80,700					10
12	227,100	81,200	80,700					12
15	181,800	81,200	80,700	79,900				15
20	134,700	81,200	80,700	79,900	79,200	75,400		20
25	104,000	81,200	80,700	79,900	79,200	75,400	63,800	25
30	77,100	81,200	80,700	79,900	77,800	75,400	61,300	30
35		64,200	65,900	66,100	65,500	64,300	55,100	35
40		52,300	53,900	54,200	53,700	52,500	49,700	40
45		43,800	45,300	45,700	45,200	44,100	43,400	45
50			38,700	39,100	38,700	37,600	36,900	50
55			33,600	33,900	33,600	32,600	31,900	55
60			29,400	29,700	29,400	28,500	27,800	60
65				26,300	25,900	25,000	24,400	65
70				23,400	23,000	22,100	21,500	70
75				20,900	20,500	19,600	19,100	75
80					18,400	17,500	17,100	80
85					16,700	15,800	15,300	85
90					15,000	14,200	13,600	90
95						12,800	12,200	95
100						11,500	10,900	100
105						10,400	9,800	105
110							8,800	110
115							7,800	115
120							7,000	120

This material is supplied for reference use only. Operator must refer to in-cab Crane Rating Manual and Operator's Manual to determine allowable crane lifting capacities and assembly and operating procedures.



**Main Boom Lift Capacity Chart - 360° Rotation - Fully Extended Tracks  
 ABCD+A [82,000lb (37 194kg) Counterweight]  
 [All capacities are listed in lbs]**

Load Radius (ft)	Main Boom - EM5 Boom Mode					Load Radius (ft)
	Boom Length - ft					
	42.4	56.4	71.3	87.0	103.6	
8	280,000					8
9	270,700					9
10	259,500	168,500	157,800			10
12	227,100	168,500	157,800			12
15	181,800	168,500	147,700	120,000		15
20	134,700	137,600	127,300	110,700	93,500	20
25	104,000	107,500	108,400	97,300	88,200	25
30	77,100	80,400	81,400	81,000	77,900	30
35		63,200	64,500	64,100	62,900	35
40		51,500	52,600	52,400	51,400	40
45		42,800	44,100	44,000	42,900	45
50			37,500	37,400	36,400	50
55			32,400	32,300	31,400	55
60			28,200	28,100	27,300	60
65				24,700	23,800	65
70				21,800	20,900	70
75				19,300	18,500	75
80					16,500	80
85					14,700	85
90					13,000	90

This material is supplied for reference use only. Operator must refer to in-cab Crane Rating Manual and Operator's Manual to determine allowable crane lifting capacities and assembly and operating procedures.

# Fly Attachment Load Charts – Standard

<b>Jib Boom Lift Capacity Chart - 360° Rotation - Fully Extended Tracks</b> <b>ABCD+A [82,000lb (37 194kg) Counterweight</b> <b>Main Boom EM2 + 10' Offset Fly</b> [All capacities are listed in lbs]													
Radius (ft)	Boom Length (ft)												Radius (ft)
	42.4				56				68.3				
	0°	15°	30°	45°	0°	15°	30°	45°	0°	15°	30°	45°	
10.0	71,600	71,600	71,600	62,700	71,600	71,600	71,600		71,500				10.0
12.0	71,600	71,600	70,200	61,700	71,600	71,600	71,600	62,700	71,500	71,500			12.0
15.0	71,600	71,600	66,700	59,900	71,600	71,600	70,400	61,700	71,500	71,500	71,500	62,500	15.0
20.0	71,600	71,600	62,700	57,200	71,600	71,600	65,900	59,400	71,500	67,700	63,800	60,500	20.0
25.0	71,600	66,600	60,100	54,800	71,600	71,600	62,700	57,200	63,100	60,000	57,000	54,700	25.0
30.0	71,600	62,700	57,100	53,200	71,600	68,500	61,100	55,200	56,200	53,400	51,100	49,400	30.0
35.0	63,200	60,600	55,200		65,400	62,800	58,500	53,700	50,300	48,100	46,300	45,000	35.0
40.0	51,600	52,000			53,700	54,100	54,500	52,700	45,500	43,800	42,400	41,800	40.0
45.0					45,100	45,500	45,800		41,800	40,500	39,400	38,700	45.0
50.0					38,600	38,900	39,100		38,500	37,400	36,600	36,000	50.0
55.0					33,500	33,700			34,600	34,700	34,100		55.0
60.0									30,400	30,600	30,800		60.0
65.0									27,000	27,100			65.0
70.0													70.0
75.0													75.0
80.0													80.0
85.0													85.0
90.0													90.0
95.0													95.0
100.0													100.0
105.0													105.0
110.0													110.0

This material is supplied for reference use only. Operator must refer to in-cab Crane Rating Manual and Operator's Manual to determine allowable crane lifting capacities and assembly and operating procedures.

**Jib Boom Lift Capacity Chart - 360° Rotation - Fully Extended Tracks**  
**ABCD+A [82,000lb (37 194kg) Counterweight**  
**Main Boom EM2 + 10' Offset Fly**  
 [All capacities are listed in lbs]

Radius (ft)	Boom Length (ft)												Radius (ft)
	82				95				110				
	0°	15°	30°	45°	0°	15°	30°	45°	0°	15°	30°	45°	
<b>10.0</b>													<b>10.0</b>
<b>12.0</b>													<b>12.0</b>
<b>15.0</b>	71,400	71,400											<b>15.0</b>
<b>20.0</b>	70,000	66,700	63,900	61,100	59,700	57,600	55,700		48,100				<b>20.0</b>
<b>25.0</b>	61,700	59,200	57,000	55,300	52,400	50,800	49,300	48,200	48,100	48,100	48,100		<b>25.0</b>
<b>30.0</b>	54,600	52,600	51,000	49,600	46,600	45,300	44,200	43,300	47,300	46,300	45,400	44,700	<b>30.0</b>
<b>35.0</b>	48,900	47,300	46,000	45,000	41,800	41,200	40,300	39,600	42,600	41,800	41,400	40,800	<b>35.0</b>
<b>40.0</b>	44,200	42,900	41,900	41,600	38,200	37,400	36,700	36,100	39,000	38,300	37,800	37,300	<b>40.0</b>
<b>45.0</b>	40,800	39,700	38,900	38,300	34,800	34,100	33,600	33,100	35,600	35,100	34,600	34,200	<b>45.0</b>
<b>50.0</b>	37,400	36,500	35,800	35,400	31,900	31,400	30,900	30,600	32,700	32,200	31,900	31,600	<b>50.0</b>
<b>55.0</b>	34,500	33,800	33,200	32,900	29,400	29,000	28,600	28,300	30,200	29,800	29,500	29,200	<b>55.0</b>
<b>60.0</b>	30,800	31,100	31,000	30,700	27,300	26,900	26,600	26,400	27,900	27,600	27,400	27,200	<b>60.0</b>
<b>65.0</b>	27,300	27,500	27,700		25,300	25,000	24,800	24,600	26,000	25,700	25,500	25,400	<b>65.0</b>
<b>70.0</b>	24,400	24,600	24,700		23,700	23,400	23,200	23,100	24,200	24,000	23,900	23,700	<b>70.0</b>
<b>75.0</b>	22,000	22,100	22,200		22,200	22,000	21,800		22,000	22,200	22,300	22,300	<b>75.0</b>
<b>80.0</b>	19,900	20,000			20,100	20,200	20,300		19,900	20,000	20,200	20,300	<b>80.0</b>
<b>85.0</b>					18,200	18,400	18,500		18,000	18,200	18,300		<b>85.0</b>
<b>90.0</b>					16,700	16,800			16,500	16,700	16,800		<b>90.0</b>
<b>95.0</b>					15,300				15,100	15,200	15,300		<b>95.0</b>
<b>100.0</b>									13,800	13,900	14,000		<b>100.0</b>
<b>105.0</b>									12,700	12,800			<b>105.0</b>
<b>110.0</b>									11,700				<b>110.0</b>

This material is supplied for reference use only. Operator must refer to in-cab Crane Rating Manual and Operator's Manual to determine allowable crane lifting capacities and assembly and operating procedures.

**Jib Lift Capacity Chart - 360° Rotation - Fully Extended Tracks**  
**ABCD+A [82,000lb (37 194kg) Counterweight**  
**Main Boom EM2 + 10' Offset Fly**  
 [All capacities are listed in lbs]

Load Radius (ft)	Boom Length (ft)												Load Radius (ft)
	122.6				138				151.1				
	0°	15°	30°	45°	0°	15°	30°	45°	0°	15°	30°	45°	
25.0	37,700												25.0
30.0	37,700	37,700	37,700	37,700	35,800	35,900			30,100	30,600			30.0
35.0	37,700	37,700	37,700	37,300	35,800	35,900	35,900	35,900	30,100	30,600	32,000		35.0
40.0	35,300	34,800	34,400	34,000	35,500	35,100	34,700	34,500	30,100	30,600	32,000	32,000	40.0
45.0	32,200	31,800	31,500	31,200	32,400	32,100	31,800	31,600	29,900	29,700	29,500	29,400	45.0
50.0	29,500	29,200	28,900	28,700	29,800	29,500	29,300	29,100	27,400	27,300	27,100	27,000	50.0
55.0	27,200	26,900	26,700	26,600	27,400	27,200	27,100	26,900	25,200	25,100	25,000	24,900	55.0
60.0	25,200	25,000	24,800	24,600	25,400	25,200	25,100	25,000	23,300	23,200	23,100	23,100	60.0
65.0	23,400	23,200	23,000	22,900	23,500	23,400	23,300	23,200	21,500	21,500	21,400	21,400	65.0
70.0	21,700	21,600	21,500	21,400	21,900	21,800	21,700	21,700	20,300	20,200	20,200	20,100	70.0
75.0	20,600	20,500	20,400	20,300	20,700	20,600	20,600	20,500	18,900	18,800	18,800	18,800	75.0
80.0	19,300	19,200	19,100	19,100	19,100	19,300	19,300	19,200	17,600	17,600	17,500	17,500	80.0
85.0	17,800	18,000	18,000	17,900	17,500	17,700	17,600	17,800	16,400	16,400	16,400	16,400	85.0
90.0	16,400	16,500	16,700	16,700	15,900	16,000	16,200	16,300	15,400	15,400	15,400	15,400	90.0
95.0	14,900	15,100	15,200		14,400	14,600	14,700	14,800	14,100	14,200	14,400	14,400	95.0
100.0	13,700	13,800	13,900		13,200	13,300	13,400	13,500	12,800	13,000	13,100	13,200	100.0
105.0	12,500	12,600	12,700		12,000	12,200	12,300	12,300	11,700	11,800	11,900	12,000	105.0
110.0	11,500	11,600	11,600		11,000	11,100	11,200		10,600	10,800	10,900	11,000	110.0
115.0	10,600	10,600			10,100	10,200	10,200		9,700	9,800	9,900	10,000	115.0
120.0	9,700	9,800			9,200	9,300	9,400		8,900	9,000	9,100		120.0
125.0					8,400	8,500	8,600		8,100	8,200	8,300		125.0
130.0					7,700	7,800			7,400	7,500	7,500		130.0
135.0					7,100	7,200			6,700	6,800	6,900		135.0
140.0									6,100	6,200			140.0
145.0									5,600	5,600			145.0
150.0									5,100				150.0
155.0													155.0
160.0													160.0
165.0													165.0
170.0													170.0
175.0													175.0
180.0													180.0

This material is supplied for reference use only. Operator must refer to in-cab Crane Rating Manual and Operator's Manual to determine allowable crane lifting capacities and assembly and operating procedures.

<b>Jib Lift Capacity Chart - 360° Rotation - Fully Extended Tracks</b>									
<b>ABCD+A [82,000lb (37 194kg) Counterweight</b>									
<b>Main Boom EM2 + 10' Offset Fly</b>									
<b>[All capacities are listed in lbs]</b>									
<b>Load Radius (ft)</b>	<b>Boom Length (ft)</b>								<b>Load Radius (ft)</b>
	<b>166</b>				<b>180.4</b>				
	<b>0°</b>	<b>15°</b>	<b>30°</b>	<b>45°</b>	<b>0°</b>	<b>15°</b>	<b>30°</b>	<b>45°</b>	
<b>25.0</b>									<b>25.0</b>
<b>30.0</b>									<b>30.0</b>
<b>35.0</b>	26,700	27,100			23,500				<b>35.0</b>
<b>40.0</b>	26,700	27,100	28,500	29,000	23,500	24,000			<b>40.0</b>
<b>45.0</b>	26,700	27,100	28,500	29,000	23,500	24,000	25,200	25,900	<b>45.0</b>
<b>50.0</b>	26,700	27,100	28,500	28,400	23,500	24,000	25,200	25,900	<b>50.0</b>
<b>55.0</b>	26,700	26,700	26,500	26,300	23,500	24,000	25,200	25,900	<b>55.0</b>
<b>60.0</b>	25,000	24,800	24,600	24,500	23,500	24,000	25,200	25,600	<b>60.0</b>
<b>65.0</b>	23,200	23,100	23,000	22,800	23,500	24,000	24,100	24,000	<b>65.0</b>
<b>70.0</b>	21,600	21,500	21,400	21,300	21,800	22,200	22,400	22,500	<b>70.0</b>
<b>75.0</b>	20,000	20,300	20,200	20,200	19,400	19,700	20,000	20,200	<b>75.0</b>
<b>80.0</b>	17,900	18,200	18,400	18,600	17,600	17,600	17,800	18,000	<b>80.0</b>
<b>85.0</b>	16,400	16,600	16,800	17,000	15,800	16,000	16,200	16,400	<b>85.0</b>
<b>90.0</b>	14,800	15,000	15,200	15,300	14,200	14,400	14,600	14,700	<b>90.0</b>
<b>95.0</b>	13,300	13,500	13,700	13,800	12,700	13,000	13,100	13,300	<b>95.0</b>
<b>100.0</b>	12,100	12,300	12,400	12,500	11,500	11,700	11,800	12,000	<b>100.0</b>
<b>105.0</b>	10,900	11,100	11,300	11,400	10,300	10,500	10,700	10,800	<b>105.0</b>
<b>110.0</b>	9,900	10,100	10,200	10,300	9,300	9,500	9,600	9,800	<b>110.0</b>
<b>115.0</b>	9,000	9,100	9,300	9,300	8,400	8,600	8,700	8,800	<b>115.0</b>
<b>120.0</b>	8,200	8,300	8,400	8,500	7,600	7,700	7,800	7,900	<b>120.0</b>
<b>125.0</b>	7,400	7,500	7,600	7,700	6,800	6,900	7,100	7,100	<b>125.0</b>
<b>130.0</b>	6,700	6,800	6,900		6,100	6,200	6,300	6,400	<b>130.0</b>
<b>135.0</b>	6,000	6,100	6,200		5,500	5,600	5,700	5,700	<b>135.0</b>
<b>140.0</b>	5,400	5,500	5,600		4,900	5,000	5,100		<b>140.0</b>
<b>145.0</b>	4,900	5,000	5,000		4,300	4,400	4,500		<b>145.0</b>
<b>150.0</b>	4,400	4,400	4,500		3,800	3,900	4,000		<b>150.0</b>
<b>155.0</b>	3,900	4,000			3,300	3,400	3,500		<b>155.0</b>
<b>160.0</b>	3,500	3,500			2,900	2,900	3,000		<b>160.0</b>
<b>165.0</b>	3,100				2,500	2,500			<b>165.0</b>
<b>170.0</b>					2,100	2,100			<b>170.0</b>
<b>175.0</b>					1,700	1,800			<b>175.0</b>
<b>180.0</b>					1,400				<b>180.0</b>

This material is supplied for reference use only. Operator must refer to in-cab Crane Rating Manual and Operator's Manual to determine allowable crane lifting capacities and assembly and operating procedures.

<b>Jib Boom Lift Capacity Chart - 360° Rotation - Fully Extended Tracks</b> <b>ABCD+A [82,000lb (37 194kg) Counterweight</b> <b>Main Boom EM2 + 31' Offset Fly</b> [All capacities are listed in lbs]													
Radius (ft)	Boom Length (ft)												Radius (ft)
	42.4				68.3				95.0				
	0°	15°	30°	45°	0°	15°	30°	45°	0°	15°	30°	45°	
15.0	35,800	32,100			35,700								15.0
20.0	35,800	29,300			35,700	31,000			33,700				20.0
25.0	32,500	27,000	23,400		35,700	29,200			33,100				25.0
30.0	29,500	25,100	22,100	20,100	34,100	27,600	23,400		32,500	28,200			30.0
35.0	27,000	23,500	21,000	19,400	31,800	26,100	22,500	20,200	32,000	27,100	23,100		35.0
40.0	24,900	22,100	20,200	18,900	29,800	24,800	21,600	19,700	31,400	26,100	22,400	20,200	40.0
45.0	23,100	20,900	19,400	18,500	28,000	23,700	20,900	19,300	30,400	25,200	21,800	19,800	45.0
50.0	21,500	19,900	18,800	18,100	26,400	22,700	20,400	18,900	28,500	24,300	21,300	19,500	50.0
55.0	20,200	19,100	18,400		24,900	21,800	19,800	18,600	26,200	23,500	20,900	19,200	55.0
60.0	19,100	18,500	18,000		23,600	21,000	19,300	18,300	24,200	22,800	20,400	18,900	60.0
65.0					22,400	20,300	18,900	18,100	22,400	21,800	20,000	18,700	65.0
70.0					21,400	19,700	18,600	18,000	20,900	20,700	19,600	18,500	70.0
75.0					20,500	19,100	18,300		19,900	19,400	19,000	18,300	75.0
80.0					19,700	18,700	18,000		18,600	18,200	17,900	17,700	80.0
85.0					18,900	18,300			17,500	17,200	16,900	16,800	85.0
90.0					17,600				16,500	16,200	16,000	15,900	90.0
95.0									15,500	15,300	15,200		95.0
100.0									14,700	14,500	14,400		100.0
105.0									13,600	13,800	13,700		105.0
110.0									12,600	12,800			110.0
115.0									11,700	11,800			115.0
120.0													120.0
125.0													125.0
130.0													130.0
135.0													135.0
140.0													140.0
145.0													145.0
150.0													150.0
155.0													155.0
160.0													160.0
165.0													165.0
170.0													170.0
175.0													175.0
180.0													180.0
185.0													185.0
190.0													190.0

This material is supplied for reference use only. Operator must refer to in-cab Crane Rating Manual and Operator's Manual to determine allowable crane lifting capacities and assembly and operating procedures.

<b>Jib Boom Lift Capacity Chart - 360° Rotation - Fully Extended Tracks</b> <b>ABCD+A [82,000lb (37 194kg) Counterweight</b> <b>Main Boom EM2 + 31' Offset Fly</b> [All capacities are listed in lbs]													
Radius (ft)	Boom Length (ft)												Radius (ft)
	122.6				151.1				180.4				
	0°	15°	30°	45°	0°	15°	30°	45°	0°	15°	30°	45°	
15.0													15.0
20.0													20.0
25.0													25.0
30.0	28,600												30.0
35.0	28,400	26,600			17,300								35.0
40.0	28,200	25,900			17,300								40.0
45.0	27,900	25,300	22,100		17,300	17,800			14,400				45.0
50.0	27,500	24,700	21,600	19,800	17,300	17,800	18,200		14,400				50.0
55.0	25,200	24,100	21,200	19,500	17,300	17,800	18,200		14,400	14,500			55.0
60.0	23,300	22,800	20,900	19,300	17,300	17,800	18,200	19,400	14,400	14,500			60.0
65.0	21,600	21,200	20,600	19,100	17,300	17,800	18,200	19,300	14,400	14,500	15,000		65.0
70.0	20,400	20,100	19,800	18,900	17,300	17,800	18,200	19,000	14,400	14,500	15,000	15,800	70.0
75.0	19,000	18,800	18,600	18,400	17,300	17,800	17,700	17,700	14,400	14,500	15,000	15,800	75.0
80.0	17,800	17,600	17,400	17,300	16,600	16,600	16,600	16,600	14,400	14,500	15,000	15,800	80.0
85.0	16,600	16,500	16,400	16,300	15,400	15,500	15,500	15,500	14,400	14,500	15,000	15,800	85.0
90.0	15,600	15,500	15,400	15,300	14,400	14,500	14,500	14,600	14,400	14,500	15,000	15,800	90.0
95.0	14,700	14,600	14,500	14,500	13,500	13,600	13,600	13,700	13,000	13,700	14,300	14,800	95.0
100.0	13,800	13,800	13,700	13,700	12,600	12,700	12,800	12,800	11,800	12,400	13,000	13,400	100.0
105.0	13,000	13,000	13,000	12,900	11,800	11,900	12,000	12,100	10,600	11,200	11,700	12,100	105.0
110.0	11,900	12,300	12,300	12,200	10,900	11,200	11,300	11,300	9,600	10,200	10,600	11,000	110.0
115.0	11,000	11,300	11,500	11,600	10,000	10,400	10,600	10,700	8,700	9,200	9,600	9,900	115.0
120.0	10,200	10,400	10,600		9,200	9,500	9,800	10,000	7,800	8,300	8,700	9,000	120.0
125.0	9,400	9,600	9,700		8,400	8,700	9,000	9,200	7,000	7,500	7,900	8,100	125.0
130.0	8,700	8,900	9,000		7,700	8,000	8,200	8,400	6,300	6,800	7,100	7,300	130.0
135.0	8,000	8,200			7,000	7,300	7,500	7,600	5,700	6,100	6,400	6,600	135.0
140.0	7,400	7,500			6,400	6,700	6,900		5,100	5,500	5,700	5,900	140.0
145.0	5,700				5,900	6,100	6,200		4,500	4,900	5,100	5,300	145.0
150.0					5,300	5,500	5,700		4,000	4,300	4,600	4,700	150.0
155.0					4,900	5,000	5,100		3,500	3,800	4,000	4,100	155.0
160.0					4,400	4,600			3,100	3,400	3,500	3,600	160.0
165.0					4,000	4,100			2,700	2,900	3,100		165.0
170.0					3,600	3,700			2,300	2,500	2,600		170.0
175.0									1,900	2,100	2,200		175.0
180.0									1,600	1,700	1,800		180.0
185.0									1,300	1,400	1,500		185.0
190.0										1,100			190.0

This material is supplied for reference use only. Operator must refer to in-cab Crane Rating Manual and Operator's Manual to determine allowable crane lifting capacities and assembly and operating procedures.

**Jib Boom Lift Capacity Chart - 360° Rotation - Fully Extended Tracks**  
**ABCD+A [82,000lb (37 194kg) Counterweight**  
**Main Boom EM2 + 55' Offset Fly**  
 [All capacities are listed in lbs]

Radius (ft)	Boom Length (ft)												Radius (ft)
	42.4				68.3				95.0				
	0°	15°	30°	45°	0°	15°	30°	45°	0°	15°	30°	45°	
15.0	23,100												15.0
20.0	20,800				21,400								20.0
25.0	18,600	15,200			20,300				19,400				25.0
30.0	16,800	14,000			19,000				18,700				30.0
35.0	15,300	13,000			17,600	14,000			18,000				35.0
40.0	14,100	12,100	10,600		16,400	13,200			17,400	13,800			40.0
45.0	13,000	11,300	10,100		15,300	12,500	10,600		16,700	13,200			45.0
50.0	12,100	10,700	9,600	8,800	14,300	11,900	10,200		15,800	12,600	10,600		50.0
55.0	11,300	10,100	9,200	8,500	13,400	11,300	9,800	8,800	15,000	12,100	10,300		55.0
60.0	10,500	9,600	8,800	8,200	12,600	10,800	9,500	8,600	14,300	11,700	9,900	8,800	60.0
65.0	9,900	9,100	8,500	8,000	12,000	10,300	9,200	8,400	13,600	11,200	9,700	8,600	65.0
70.0	9,400	8,700	8,200	7,900	11,300	9,900	8,900	8,200	13,000	10,800	9,400	8,400	70.0
75.0	8,900	8,400	8,000	7,800	10,800	9,500	8,600	8,000	12,400	10,500	9,200	8,300	75.0
80.0	8,400	8,100	7,800		10,300	9,200	8,400	7,900	11,900	10,100	8,900	8,200	80.0
85.0	8,000	7,900			9,800	8,900	8,200	7,800	11,400	9,800	8,700	8,100	85.0
90.0					9,400	8,600	8,000	7,800	10,900	9,500	8,500	8,000	90.0
95.0					9,000	8,300	7,900	7,800	10,500	9,200	8,400	7,900	95.0
100.0					8,600	8,100	7,800		10,100	9,000	8,200	7,800	100.0
105.0					8,300	7,900	7,800		9,700	8,700	8,100	7,800	105.0
110.0					8,000	7,800			9,400	8,500	8,000	7,700	110.0
115.0									9,100	8,300	7,900	7,700	115.0
120.0									8,800	8,200	7,800		120.0
125.0									8,500	8,000	7,800		125.0
130.0									8,300	7,900	7,700		130.0
135.0									8,000	7,800			135.0
140.0									7,900	7,800			140.0
145.0													145.0
150.0													150.0
155.0													155.0
160.0													160.0
165.0													165.0
170.0													170.0
175.0													175.0
180.0													180.0
185.0													185.0
190.0													190.0
195.0													195.0
200.0													200.0

This material is supplied for reference use only. Operator must refer to in-cab Crane Rating Manual and Operator's Manual to determine allowable crane lifting capacities and assembly and operating procedures.



<b>Jib Boom Lift Capacity Chart - 360° Rotation - Fully Extended Tracks</b> <b>ABCD+A [82,000lb (37 194kg) Counterweight</b> <b>Main Boom EM2 + 55' Offset Fly</b> [All capacities are listed in lbs]													
Radius (ft)	Boom Length (ft)												Radius (ft)
	122.6				151.1				180.4				
	0°	15°	30°	45°	0°	15°	30°	45°	0°	15°	30°	45°	
15.0													15.0
20.0													20.0
25.0													25.0
30.0													30.0
35.0	15,500												35.0
40.0	15,500												40.0
45.0	15,500				12,400								45.0
50.0	15,500	13,000			12,400				10,700				50.0
55.0	15,400	12,600			12,400	12,600			10,700				55.0
60.0	15,100	12,200	10,200		12,400	12,400			10,700				60.0
65.0	14,600	11,800	10,000		12,400	12,100			10,700				65.0
70.0	14,100	11,500	9,700	8,600	12,400	11,800	10,000		10,700	10,900			70.0
75.0	13,500	11,100	9,500	8,500	12,400	11,500	9,800		10,700	10,900			75.0
80.0	13,000	10,800	9,300	8,400	12,400	11,200	9,600	8,500	10,700	10,900	9,800		80.0
85.0	12,600	10,500	9,100	8,300	12,400	11,000	9,400	8,400	10,700	10,900	9,600		85.0
90.0	12,200	10,200	8,900	8,100	12,400	10,700	9,200	8,300	10,700	10,900	9,500	8,400	90.0
95.0	11,700	9,900	8,800	8,100	12,400	10,500	9,100	8,200	10,700	10,800	9,300	8,300	95.0
100.0	11,300	9,700	8,600	8,000	12,200	10,200	8,900	8,100	10,700	10,600	9,200	8,200	100.0
105.0	11,000	9,500	8,500	7,900	11,500	10,000	8,800	8,000	10,700	10,400	9,000	8,200	105.0
110.0	10,600	9,200	8,300	7,800	10,800	9,800	8,700	8,000	10,200	10,200	8,900	8,100	110.0
115.0	10,300	9,000	8,200	7,800	10,100	9,600	8,500	7,900	9,300	10,000	8,800	8,000	115.0
120.0	10,000	8,800	8,100	7,800	9,500	9,400	8,400	7,900	8,400	9,300	8,700	8,000	120.0
125.0	9,700	8,700	8,000	7,700	9,000	9,200	8,300	7,800	7,600	8,500	8,600	7,900	125.0
130.0	9,300	8,500	7,900	7,700	8,300	8,600	8,200	7,800	6,900	7,700	8,400	7,900	130.0
135.0	8,700	8,300	7,900	7,700	7,600	8,100	8,100	7,700	6,300	7,000	7,600	7,800	135.0
140.0	8,000	8,200	7,800	7,700	7,000	7,500	7,800	7,700	5,600	6,300	6,900	7,300	140.0
145.0	7,500	7,800	7,800		6,400	6,900	7,300	7,500	5,100	5,700	6,300	6,600	145.0
150.0	7,000	7,200	7,400		5,900	6,400	6,700	6,900	4,600	5,200	5,700	6,000	150.0
155.0	6,500	6,700	6,800		5,400	5,800	6,100	6,300	4,100	4,600	5,100	5,400	155.0
160.0	6,000	6,200			5,000	5,300	5,600	5,700	3,600	4,200	4,600	4,800	160.0
165.0	5,600	5,800			4,500	4,900	5,100		3,200	3,700	4,100	4,300	165.0
170.0					4,100	4,500	4,700		2,800	3,300	3,600	3,800	170.0
175.0					3,800	4,000	4,200		2,400	2,900	3,200	3,300	175.0
180.0					3,400	3,700	3,800		2,100	2,500	2,800	2,900	180.0
185.0					3,100	3,300			1,800	2,100	2,400	2,500	185.0
190.0					2,800	3,000			1,500	1,800	2,000		190.0
195.0									1,200	1,500	1,700		195.0
200.0										1,200	1,300		200.0

This material is supplied for reference use only. Operator must refer to in-cab Crane Rating Manual and Operator's Manual to determine allowable crane lifting capacities and assembly and operating procedures.