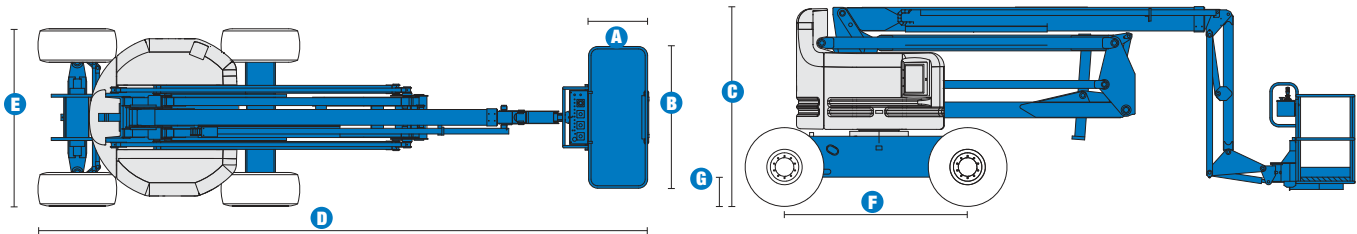


Specifications



MODEL	Z™-60/34	
MEASUREMENTS	US	Metric
Working height maximum*	66 ft 4 in	20.39 m
Platform height maximum	60 ft 4 in	18.39 m
Horizontal reach maximum	36 ft 3 in	11.05 m
Up and over clearance maximum	27 ft	8.23 m
A Platform length - 8 ft / 6 ft model	3 ft / 2 ft 6 in	.91 m / .76 m
B Platform width - 8 ft / 6 ft model	8 ft / 6 ft	2.44 m / 1.83 m
C Height - stowed	8 ft 10 in	2.69 m
D Length - stowed	26 ft 9 in	8.15 m
E Width	8 ft 1 in	2.46 m
F Wheelbase	8 ft 3 in	2.51 m
G Ground clearance - center	1 ft 4 in	.41 m

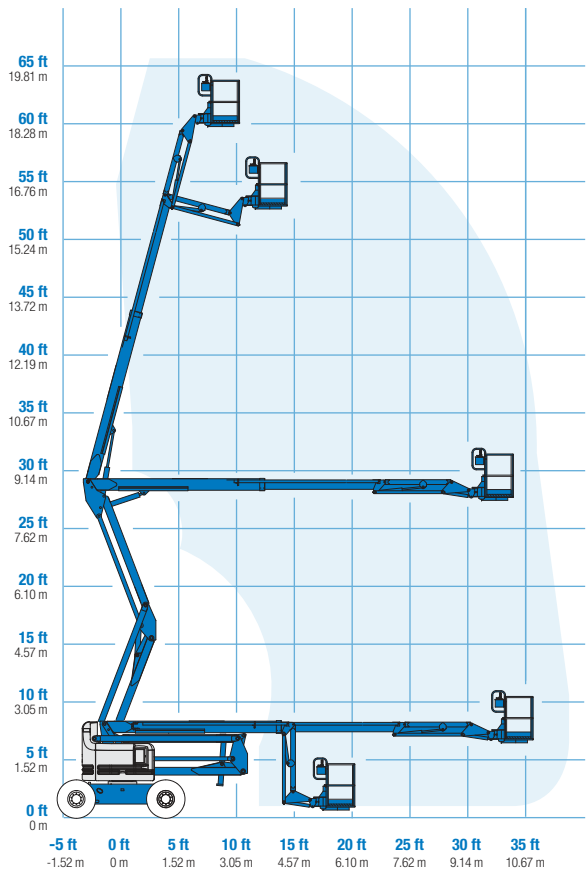
PRODUCTIVITY		
Lift capacity	500 lbs	227 kg
Platform rotation	180°	
Vertical jib rotation	90°	
Turntable rotation	360° continuous	
Turntable tailswing	zero	
Drive speed - stowed	3.0 mph	4.8 km/h
Drive speed - raised**	0.68 mph	1.1 km/h
Gradeability - 2WD - stowed***	25%	25%
Gradeability - 4WD - stowed***	40%	40%
Turning radius - inside	10 ft	3.04 m
Turning radius - outside	19 ft 11 in	6.07 m
Controls	12V DC proportional	
Tires	385/65 D19.5, 12 ply	

POWER	
Power source	Ford DSG-423 4-cylinder gas/LPG 75 hp (56 kW) Deutz D2011L03i 3-cylinder diesel 48 hp (35.8 kW) Perkins 404D-22 4-cylinder diesel 51 hp (38.0 kW)
Auxiliary power unit	12V DC
Hydraulic tank capacity	45 gal 170.3 L
Fuel tank capacity	20 gal 75.7 L

WEIGHT****	
	22,520 lbs 10,215 kg

STANDARDS COMPLIANCE ANSI A92.5, CSA B354.4, EN 280, AS 1418.10

RANGE OF MOTION Z™-60/34



* The metric equivalent of working height adds 2 m to platform height. U.S. adds 6 ft to platform height.
** In lift mode (platform raised), the machine is designed to operate on firm, level surfaces only.
*** Gradeability applies to driving on slopes. See operators manual for details regarding slope ratings.
**** Weight will vary depending on options and/or country standards.

Features

EASILY CONFIGURED TO MEET YOUR NEEDS

PLATFORM OPTIONS

- Steel 8 ft (2.44 m) (standard)
- Steel 6 ft (1.83 m)
- 8 ft (2.44 m) tri-entry**

JIB

- 6 ft (1.83 m) jib boom

ENGINE OPTIONS

- Ford gas/LPG 75 hp (56 kW)
- Deutz diesel 48 hp (35.8 kW)
- Perkins diesel 51 hp (38 kW)

DRIVE OPTIONS

- 2WD
- 4WD

AXLE OPTIONS

- Active oscillation (standard on 4WD)
- Non-oscillating

TIRE OPTIONS

- Rough terrain air-filled (standard)
- Rough terrain foam-filled
- High flotation air-filled
- Sealant treated air-filled

STANDARD FEATURES

MEASUREMENTS

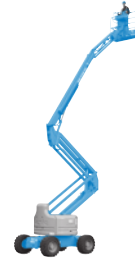
- 66 ft 4 in (20.39 m) working height
- 36 ft 3 in (11.05 m) horizontal reach
- 27 ft (8.23 m) up and over clearance
- Up to 500 lb (227 kg) lift capacity

PRODUCTIVITY

- Self-leveling platform
- Hydraulic platform rotation
- Fully proportional controls
- Drive enable
- AC power cord to platform
- Horn
- Hour meter
- Tilt alarm
- Descent alarm
- 360° continuous turntable rotation
- Locking turntable covers
- Zero tailswing
- Positive traction drive
- 2 speed wheel motors

POWER

- 12V DC auxiliary power
- Engine protection package
- Anti-restart engine protection
- Auto engine fault shutdown
- Intake air heater (Deutz engine)



OPTIONS & ACCESSORIES

PRODUCTIVITY OPTIONS

- Platform swing gate
- Half mesh platform inserts with swing gate
- Platform top auxiliary rail
- Arc Pro 275™ Heavy-Duty Welder package*
- Welder Ready package*
- Weld leads to platform
- Hydraulic oil cooler
- Air line to platform
- Biodegradable hydraulic oil
- Aircraft protection package
- Deluxe hostile environment package
- Thumb rocker steer
- Tool tray
- Pipe cradle (pair)
- Alarm package
- Panel cradle package*
- Platform work lights
- Lockable platform control box covers
- Aircraft protection package
- Light package

POWER OPTIONS

- Engine gauge package
- AC generator packages (110V/60Hz - 220V/50Hz, 3000W)
- Cold Weather Packages
- Diesel scrubber/spark arrestor (catalytic muffler)
- LPG tank 33.5 lb (15.19 kg) capacity

* Available on select models

** Not available on CE machines

Genie United States

18340 NE 76th Street
P.O. Box 97030
Redmond, Washington 98073-9730

Telephone **+1 (425) 881-1800**
Toll Free in USA/Canada **+1 (800) 536-1800**
Fax +1 (425) 883-3475

Genie Europe

The Maltings
Wharf Road
Grantham NG31 6BH
UK

Telephone **+44 (0)1476 584333**
Fax +44 (0)1476 584334

Email: AWP-InfoEurope@terex.com

Distributed By:



The Lifting Professionals

Bolingbrook, IL
(630) 972-0199

South Holland, IL
(219) 972-0199

[Click Here to Request a Quote](#)

Effective Date: April, 2011. Product specifications and prices are subject to change without notice or obligation. The photographs and/or drawings in this document are for illustrative purposes only. Refer to the appropriate Operator's Manual for instructions on the proper use of this equipment. Failure to follow the appropriate Operator's Manual when using our equipment or to otherwise act irresponsibly may result in serious injury or death. The only warranty applicable to our equipment is the standard written warranty applicable to the particular product and sale and we make no other warranty, express or implied. Products and services listed may be trademarks, service marks or trade-names of Terex Corporation, Genie Industries, Inc. and/or their subsidiaries in the U.S.A. and many other countries and all rights are reserved. Terex is a Registered Trademark of Terex Corporation in the U.S.A. and many other countries. Genie is a Registered Trademark of Genie Industries, Inc. in the U.S.A. and many other countries. Genie is a Terex Brand. © 2011 Terex Corporation.