

Technical sheet :

MLT 737-130 PS+ ST4



Capacities		Imperial
Max. capacity	Q	8157.10 lbs
Max. lifting height	h3	22 ft 7.65 in
Max. outreach	r1	12 ft 9.54 in
Reach at max. height		3 ft 3.37 in
Breakout force with bucket		5520 daN
Weight and dimensions		
Unladen weight (with forks)		16975.59 lbs
Ground clearance	m4	1 ft 4.14 in
Wheelbase	y	9 ft 2.62 in
Overall length to carriage (with hitch)	l11	16 ft 3.66 in
Front overhang		3 ft 11.63 in
Overall width	b1	7 ft 10.09 in
Overall cab width	b4	3 ft 1.40 in
Overall height	h17	7 ft 9.70 in
Tilt-down angle	a5	134 °
Tilt-up angle	a4	12 °
External turning radius (over tyres)	Wa1	12 ft 10.33 in
Standard tyres		Alliance - A580 - 460/70 R24 159A8
Drive wheels (front / rear)		2 / 2
Steering wheels (front / rear)		2 / 2
Performances		
Lifting		7.60 s
Lowering		5.40 s
Extension		7.80 s
Retraction		5.90 s
Crowd		3.80 s
Dump		3 s
Engine		
Engine brand		Deutz
Engine nom		Stage IV
Engine model		TCD 3.6 l
Number of cylinders - Capacity of cylinders		4 - 220.96 in³
I.C. Engine power rating / Power (kW)		129 Hp / 95 kW
Max. torque / Engine rotation		500 Nm @1600 rpm
Drawbar pull (Laden)		7900 daN
Reversible fan		Standard
Engine cooling system		4 radiators (water + intercooler + hydraulic oil + transmission oil)
Transmission		
Transmission type		Torque Converter
Gearbox		Powershift Plus (M-Shift)
Number of gears (forward / reverse)		6 / 3
Max. travel speed (may vary according to applicable regulations)		24.85 mph
Differential lock		Limited slip differential on front axle
Parking brake		Manual
Service brake		Oil-immersed multi-discs braking on front & rear axles
Hydraulics		
Hydraulic pump type		Load sensing pump
Hydraulic flow - Pressure		150 l/min - 3916.01 PSI
Flow sharing distributor		Standard
Tank capacities		
Hydraulic oil		35.66 US gal
Fuel tank		31.70 US gal
Diesel Exhaust fluid (AdBlue® type)		2.64 US gal
Noise and vibration		
Noise at driving position (LpA) tested following NF EN 12053 norm		73 dB(A)
Environmental noise (LWA)		105 dB(A)
Vibration to whole hand/arm		< 2.50 m/s²
Miscellaneous		
Tractor homologation		Tractor homologation
Safety cab homologation		ROPS - FOPS cab (level 2)
Controls		JSM

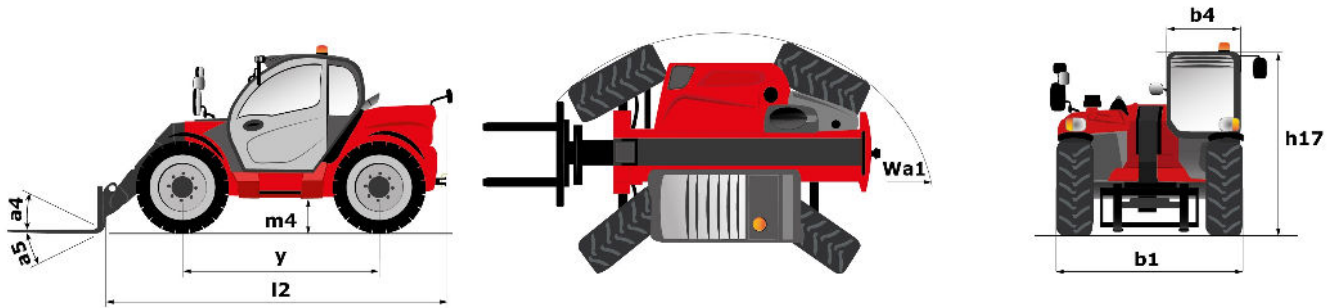
Options / Finishing

S : Standard / O : Optional / - : Not available

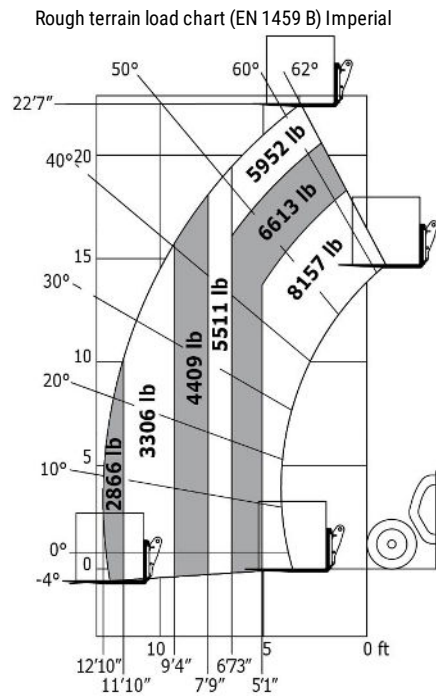
	Classic	Premium	Elite
Lifting function			
Easy Connect System (E.C.S.)	S	S	S
Electrovalve for 2 hydraulic functions (on boom head)	O	O	O
Hydraulic attachment locking	O	O	O
Intelligent Hydraulics	O	O	O

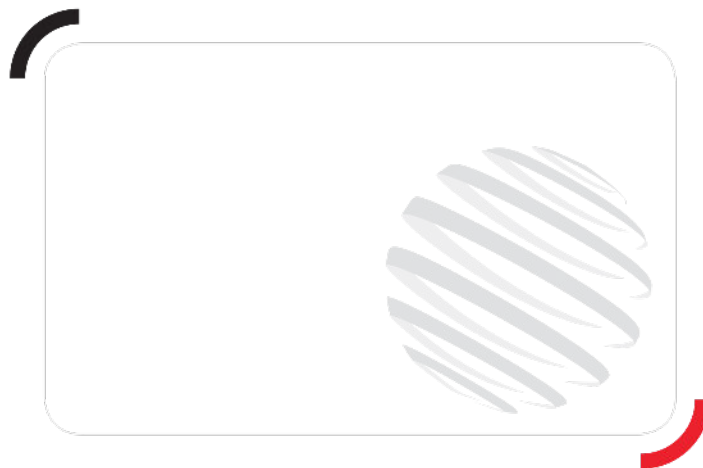
	Classic	Premium	Elite
Regenerative Hydraulics	0	0	0
Return pipe to hydraulic oil tank	0	0	0
Operator station			
"Active CRC" boom suspension	0	0	S
"Harmony" screen	S	S	-
"Vision" display	0	0	S
Air conditioning with automatic adjustment	0	0	S
Air conditioning with manual adjustment	0	S	S
Air suspension cloth-covered seat	0	-	-
Air suspension cloth-covered seat (GRAMMER)	0	S	-
Automatic wheel alignment	0	0	S
Bluetooth USB car radio with extra microphone (100 W)	0	0	S
Bluetooth USB car radio with integrated microphone (100 W)	0	S	-
Electric mirror with de-icing	0	0	S
Extra front wiper	0	S	S
Lateral wiper	S	S	S
Low frequency air suspension cloth-covered seat	-	-	S
Low frequency air suspension cloth-covered seat (GRAMMER)	-	0	S
Low frequency air suspension cloth-covered seat with heating (GRAMMER)	0	0	0
Mechanical cloth-covered seat (GRAMMER)	S	-	-
Tuner car radio (50 W)	S	-	-
vision screen (7")	0	0	S
Motorization/Power			
Auto reversing fan	S	S	S
Continuous flow hydraulics	0	0	S
Hand throttle	0	0	S
Self cleaning air prefilter	S	S	S
Secondary functions			
1 pair of pre-fitted Double Action rear hydraulic couplers	0	0	0
Additional fuel tank	0	-	-
Additional fuel tank (25 l)	0	0	0
Automatic rotating towing hitch on counterweight	0	0	0
Hydraulic pick-up hitch	0	0	0
Hydraulic trailer brake	S	S	S
Ladder hitch with choice of hooks	0	0	0
Manual rotating towing hitch	S	S	S
Lighting			
Boom Work Lights (on fixed part) (x2)	0	0	0
Front and rear LED work lights on cab (x4 : 2 front + 2 rear)	0	S	S
Front and rear work lights on cab (x4: 2 front + 2 rear)	S	-	-
LED + (4 additional work lights)	0	0	0
Safety			
Audio warning on reverse	0	0	0

Dimensional drawing



Load chart





Siège Social

430 rue de l'Aubinière - 44150 Ancenis Cedex - France

Tel: +33(0)2 40 09 10 11 - Fax: +33 (0)2 40 09 10 97

www.manitou.com



This brochure describes versions and configuration options for Manitou products which may be fitted with different equipment. The equipment described in this brochure may be standard, optional or not available depending on version. Manitou reserves the right to change the specifications shown and described at any time and without prior warning. The manufacturer is not liable for the specifications given. For more information, contact your Manitou dealer. Non-contractual document. Product descriptions may differ from actual products. List of specifications is not comprehensive. The logos and visual identity of the company are the property of Manitou and may not be used without authorisation. All rights reserved. The photos and diagrams contained in this brochure are provided for information only.

MANITOU BF SA - Limited company with board of directors - Share capital: 39,668,399 euros - 857 802 508 RCS Nantes