

Data subject to change without prior notice
Edition 03/2020 © 2020 JMG Cranes S.p.A. All rights reserved
Rev.1 - 03/20



Electric Pick & Carry Cranes

JMG Cranes S.p.A.

Sales & Service Office

Via Bergamo, 142

26100 Cremona - Italy

t +39 0372 1786738

Production Plant

Via Sito Nuovo 14

29010 Sarmato (PC) - Italy

t +39 0523 8486

e info@jmgcranes.com

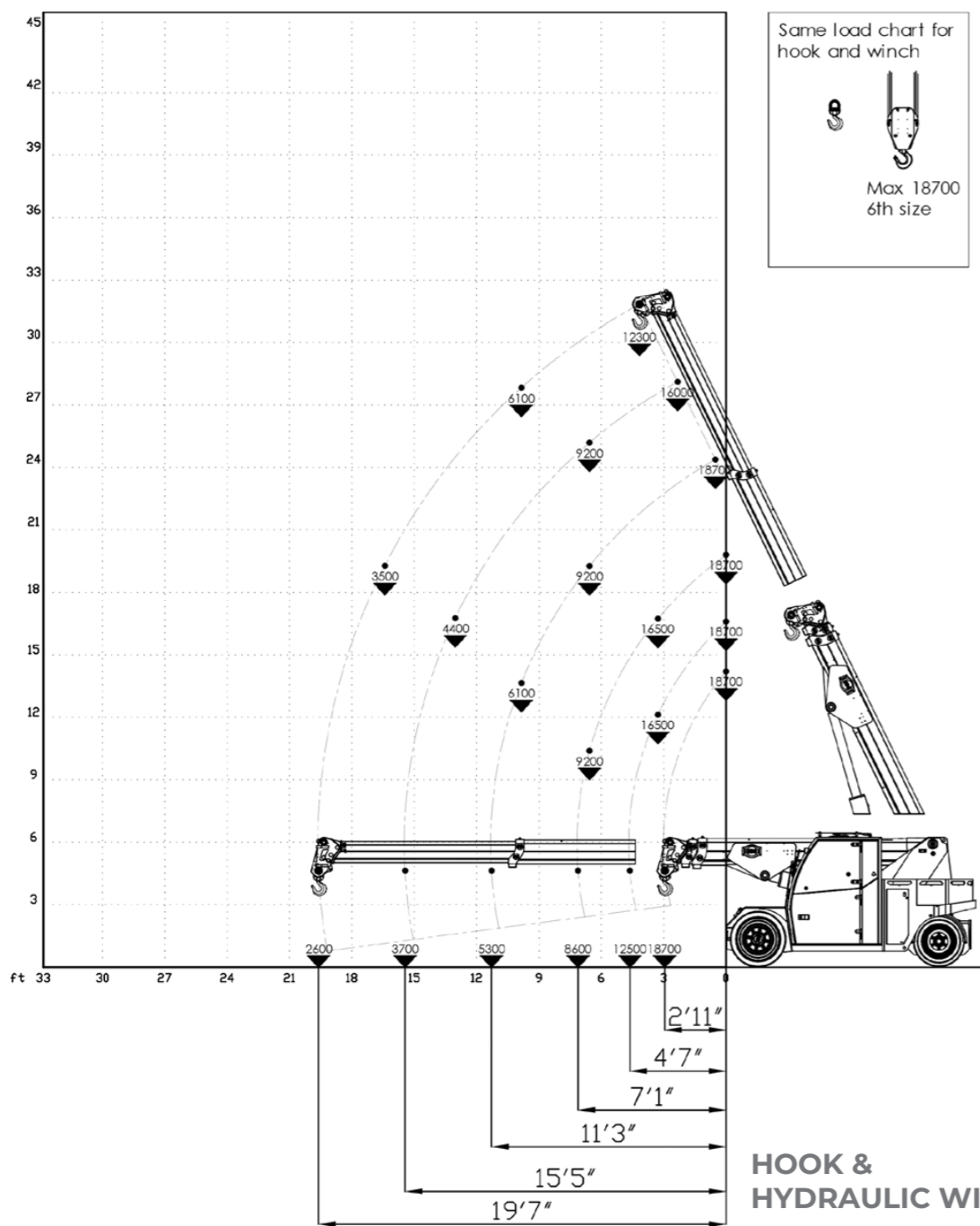


MC 85 (inch)

Max Capacity 18,700 lbs

www.jmgcranes.com

JMG[®]
movetosolution



Load charts



Technical features

Max Capacity lbs	18,700
Dimension inch	11'12"x5'7"x6'3"

	Front-wheels drive. 2 electric motors AC 7,5 kW 72V Insulation class H		LMI Electronic safe load indicator and tilting moment limiter
	Total lbs 20,000		Hydraulically foot controlled service brake on all wheels, hydraulically automatic or button controlled parking brake on front wheels
	72 V - 620 Ah 8 working hours		Fabricated from preformed and welded quality steel plate
	Front nr. 2 superelastic 355x65/15" Rear nr. 2 superelastic 7.50/15"		+64°/-7,5
	Rear Steering angle -90°/+90°		Motor driven pump 1x16 kW-72 V AC

HYDRAULICALLY TELESCOPING PROPORTIONALLY TYPE BOOM

FRONT-WHEELS DRIVE WITH COUNTER ROTATION
180° REAR STEERING



Options :

- HYDRAULIC WINCH
- HYDRAULIC JIB WITH HYDRAULIC EXTENSION
- BENDABLE MANUAL JIB WITH MANUAL EXTENSION
- NON-MARKING TIRES
- RADIO REMOTE CONTROL
- HYDRAULIC FORKS
- MAN BUCKET
- ATEX CONVERSIONS
- CUSTOMIZED PAINTING



EU Standards CE

	UNI ISO 4030-1: A1
	2006/42/CE - 2000/14/CE - 2014/30 UE - 2014/35/UE - D.Lgs 262/2002 subsequent modifications
	EN 13000:2014 subsequent modifications



Dimensions

