

Technical sheet :

ATJ 46+



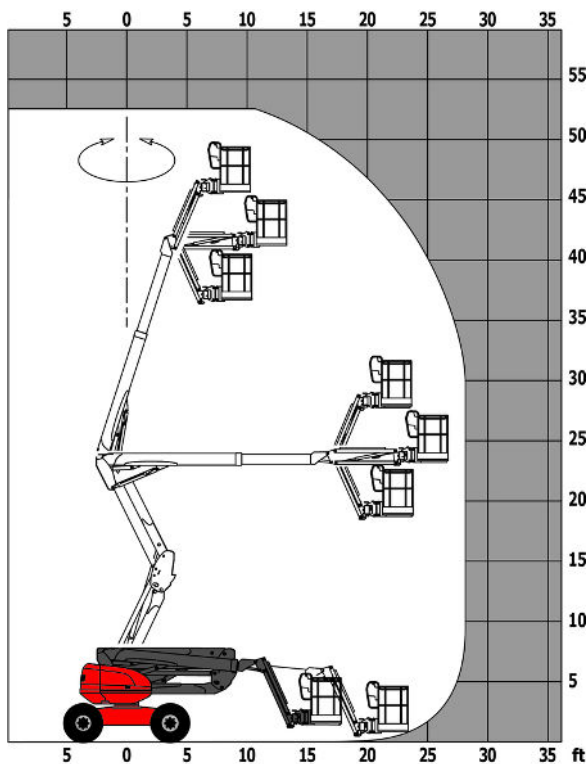
 **MANITOU**
HANDLING YOUR WORLD

Capacities		Imperial
Working height	h21	53 ft 2 in
Platform height	h7	46 ft 7 in
Max. outreach		26 ft 4 in
Overhang		24 ft 11 in
Pendular arm rotation (top / bottom)		+66.50 ° / 65.80 °
Platform capacity	Q	899 lb
Turret rotation		360 °
Platform rotation (right / left)		90 ° / 90 °
Weight and dimensions		
Platform weight*		16535 lb
Platform dimensions (length x width)	lp / ep	7 ft 7 in x 2 ft 11 in
Floor height (access)	h20	1 ft 3 in
Overall length	l1	23 ft 3 in
Overall width	b1	8 ft
Overall height	h17	8 ft 1 in
Overall length (stowed)	l9	16 ft 1 in
Overall height (stowed)	h18 ***	9 ft 8 in
Counterweight offset (turret at 90°)	a7	6 in
External turning radius	Wa3	13 ft 5 in
Ground clearance at centre of wheelbase	m2	1 ft 4 in
Wheelbase	y	7 ft 3 in
Performances		
Drive speed - stowed		3 mph
Drive speed - raised		0.62 mph
Gradeability		45 %
Wheels		
Tires type		Foam-filled
Standard tires		36 x 15 D610 / 910 x 370 mm
Drive wheels (front / rear)		2 / 2
Steering wheels (front / rear)		2 / 2
Braking wheels (front / rear)		0 / 2
Engine/Battery		
Engine brand / model		Kubota - D1105-E4B
Engine nom		Tier 4 final
I.C. Engine power rating / Power		24.80 Hp / 18.50 kW
Miscellaneous		
Ground Pressure		167 PSI
Hydraulic Pressure		4931 PSI
Hydraulic tank capacity		14 US gal
Fuel tank		13 US gal
Noise to environment (LwA)		< 98 dB
Standards compliance		
This machine is in compliance with:		ANSI A92.20-2018 CSA B354.6 ICES-002-Issue 6 Standard Canadian EMC

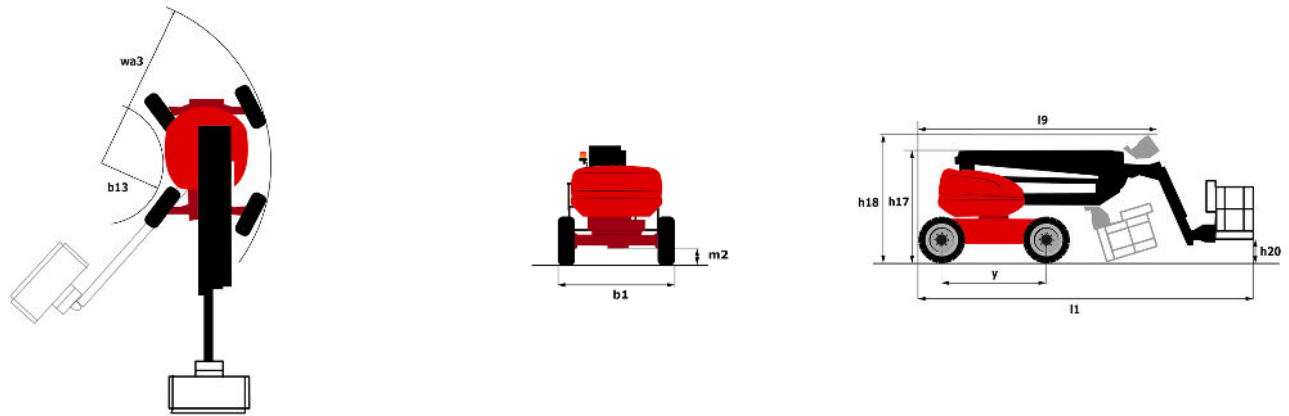
*Varies according to options and standards of the country to which the machine is delivered

ATJ 46+ - Load chart

Load Chart for MEWP (Imperial)



ATJ 46+ - Dimensional drawing



Equipment

Standard

110 V American plug with differential circuit breaker

4 simultaneous movements

4 wheel steer with crab mode

Additional storage boxes

Audible alarm and illuminated indicator lamp (leveling, overload, lowering)

Battery cut-off

CAN bus technology

Dead man pedal

Differential locking on rear axle

Drive safety orientation system

Easy Manager

Emergency stop button in platform and on frame

Front axle with limited slip

Fuel gauge with low level indicator

Galvanize basket mesh floor

Lift and drive

Lockable fuel cap

Management via engine speed bearing

Oscillating front axle

Pendular arm

Proportional controls

Protective cover for control panel

Steer and rotate

Swinging gate on platform

Optional

Biodegradable oil

Cold weather kit

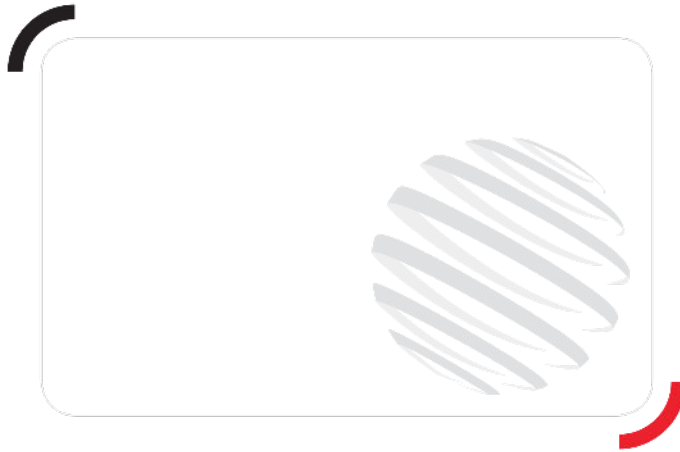
Cold weather protection oil

Electric generator

Lockable turret cover

SMS : Safe Man System

Working light



Head Office

B.P. 249 - 430 rue de l'Aubinière

44150 Ancenis Cedex - France

Tel: +33 (0)2 40 09 10 11 - Fax: +33 (0)2 40 09 10 97

www.manitou.com



This publication provides a description of the configuration versions and options for Manitou products, which may differ for equipment. The equipment presented in this brochure may be part of a series, as an option, or it may not be available, depending on the versions. Manitou reserves the right, at any time and without notice, to amend the specifications described and represented. The specifications provided do not bind the manufacturer. For more details, please contact your Manitou agent. This is not a contractually binding document. The presentation of the products is not contractually binding. List of specifications non-exhaustive. The logos as well as the visual identity of the company are owned by Manitou and cannot be used without authorisation. All rights reserved. The photos and diagrams contained in this brochure are only provided for consultation and information purposes.

MANITOU BF SA - Limited company with board of directors - Share capital: 39,668,399 euros - 857 802 508 RCS Nantes