

JFS45 VMAX



MAIN BOOM

6 telescopic sections, 360-degrees continuous rotation, max lifting capacity of 34170 lb

6613 lb HYDRAULIC JIB

6 telescopic sections, maximum working height 100 ft, maximum outreach of 98 ft, 20° negative angle



ADDITIONAL ELECTRIC ENGINE

Possibility of working without any kind of emission



DEDICATED HYDRAULIC EXTRA FUNCTION

On main boom and jib, with additional oil cooler, allowing the use of a wider range of tools whose operation require elevated quantity and pressure of oil.



GREAT ACCESSIBILITY

Even in the most confined places, thank to the compact dimensions



X-PATTERN OUTRIGGERS

With hydraulic rotation between 0° and 45° and endless operational configurations

ONE TOOL, MANY OPERATIONS

Possibility of cutting, resting on the ground and sorting the branches or trunks using grapple saw



MORE PRECISE WORK

By bringing the machine near the working area



SAFER JOB FOR THE OPERATOR

Thanks to the possibility of managing all crane and tool movements with radio remote control from safety distance



JFS45 VMAX

Grapple Saw Application

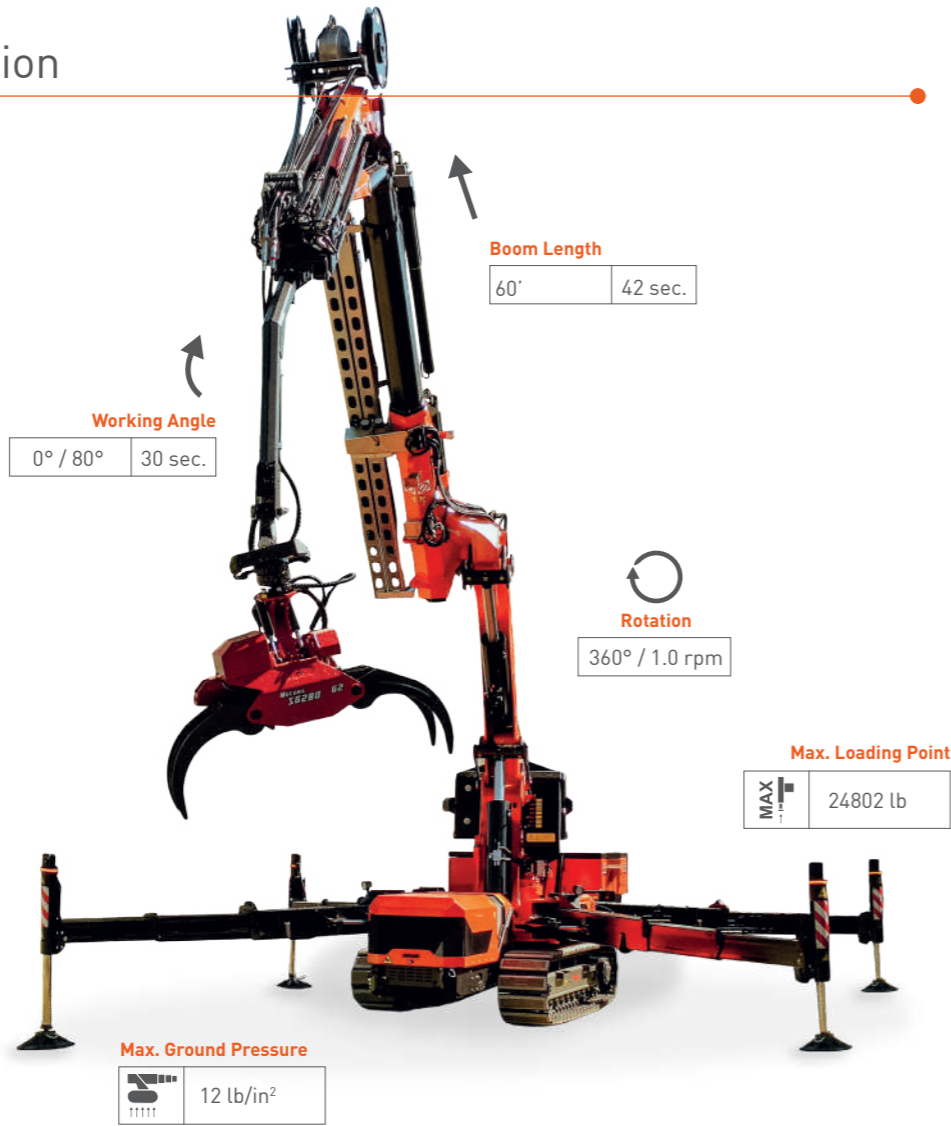


Jekko srl
Via Campardone, 1 - 31014 Colle Umberto (TV) Italy
info@jekko.it - www.jekko-cranes.com

Product Catalog
EN [ft - lb]

Technical Information

Dimensions	L x W x H	18'6" x 6' x 9'3"	
Footprint	Min	13'11" x 13'11"	
	Max	22' x 22'	
Crane & Options Weights		lb	
	JF545	29762	
	Counterweight	7716	
	Pulley Block	125	
	Winch	441	
	Power Pack	176	
	JIB3000.6HA	2645	
	Basket	440	
White Pads	660		
Winch	4409 lb single line 196'10" - Ø 1/2 in		
JFS45	Diesel Engine	KUBOTA V3307-CR-TE4B	55.4 kW 74 Hp
	Electric Power Pack	400V-3F	13 kW 17.4 Hp
Speed		1.24 mph	
Gradeability		20°	



Grapple Saw

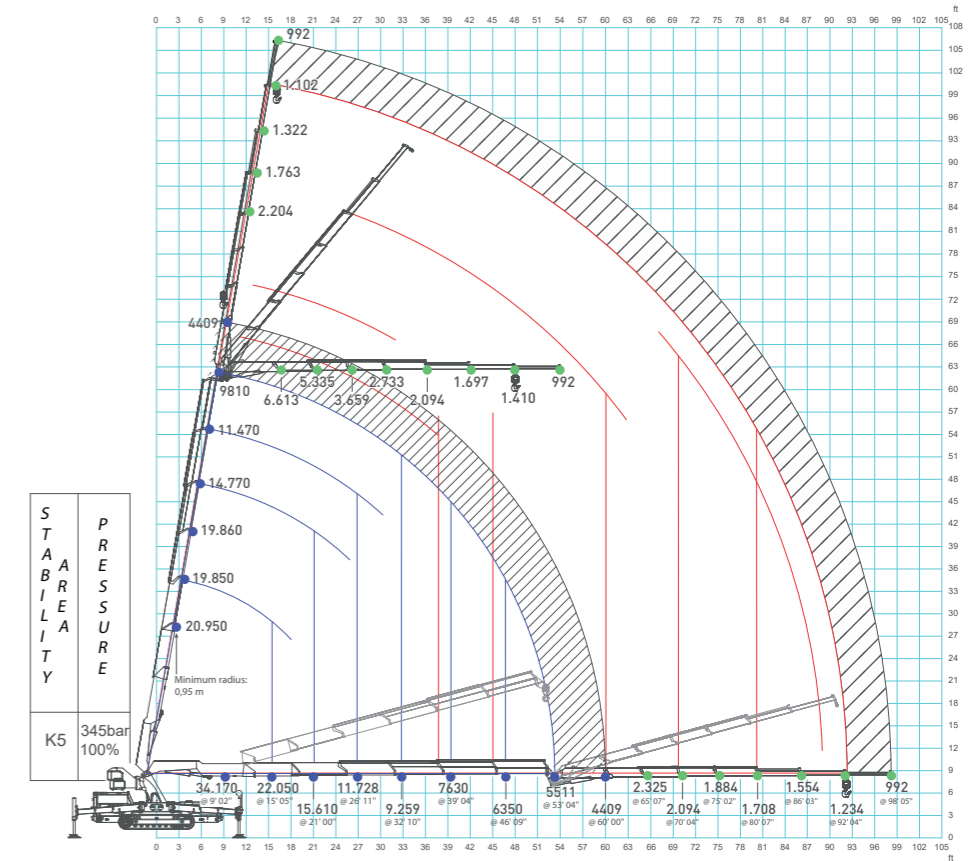
SG160RC-T-G2 (GRAPPLE-SAW-160 KIT)

Cutting diameter	Saw 16"
Opening of grapple	36.5"
Rec. work. pressure	2610-3335 psi
Rec. oil flow rate	10,5-21 gal/min 10-25 GPM
Grapple size	248 in ²
Weight	485 lb

SG280RC-T-G2 (GRAPPLE-SAW-280 KIT)

Cutting diameter	Saw 22" Saw 25"
Opening of grapple	59"
Rec. work. pressure	2610-3335 psi
Rec. oil flow rate	16-26 gal/min 15-30 GPM
Grapple size	465 in ²
Weight	860 lb

Load Chart



Crane Options

MAN-BASKET

- MWP-JIB3000.6HA-2
- MWP-1PG.JIB3000.6HA
- MWP-1PGR.JIB3000.6HA
- MWP-2PG.JIB3000.6HA
- MWP-2PGR.JIB3000.6HA
- MWP-CERT

CRANE OPTIONS

- W2000-JFM
- JF-HLS1
- MEH-JF545.6
- ME1-JF545.6
- TB-JFM

JIB & ATTACHMENTS

- ME1-JIB3000.6HA
- JIB3000.6HA ***
- MEH-JIB3000.6HA
- GRAPPLE-SAW-160 KIT ***
- GRAPPLE-SAW-280 KIT ***
- JF-HLS2
- PS-JF545
- MQC-JFM-2
- MQC-JFM-3 ***

CRAWLER OPTIONS

- TW-JFM-JFX
- HAPW-JFM
- PW10-JFM
- WTP-JFM
- PP400.13-JFM
- PP480.13-JFM

*** Mandatory for grapple saw on jib

Dimensions & Footprint

