

Jibbi 1890 PRiMO

PRiMO

SELF-PROPELLED
SELF-LEVELLING
FULL ELECTRIC

The first full electric, self-leveling, tracked telescoping boom lift with electric drive and removable Power Pack.

Designed to work in uneven terrain with changing surfaces, the Primo offers 59 ft work height with ability to be driven while raised to 46 ft and on 5° longitudinal slopes. Features that will dramatically increase efficiency and productivity.

Revolutionary inter-changeable Power Pack allows you to quickly replace the battery pack with a new fully charged battery pack, eliminating down time on job-sites and need to stop operation for charging purposes.

FULL
ELECTRIC
DRIVE

59 ft
working
height

46 ft
travel
height



Streamlined Controller with Industry standards for Operator friendly use. Two USB recharging stations available on each Controller.

FULL ELECTRIC

WITH COMPLETELY

REMOVABLE POWER PACK

IP67



EV Type 2



110 / 220 VAC *

*AUTOMATIC CHARGING POWER SETTING ACCORDING TO MAINS VOLTAGE

	BATTERY TYPE	WEIGHT	RECHARGE
ELC	Lead acid 420Ah 48V	1587 lbs	6.5 h
LTH	Lithium 330Ah 48V	661 lbs	5.0 h
	Lithium 440Ah 48V	772 lbs	6.5 h

Easily removable Power Pack with integrated forklift pockets is a revolutionary innovative power option that completely changes the benchmark for renewable energy powered products. The entire battery pack can in less than a minute be removed and replaced with a fully charged Power Pack.

The Power Pack can be charged on-or off site in less than 7 hours using standard 110v/15 outlet as well as standard EV chargers. No more down time for charging or need to bring the lift to a charging station.



REMOVABLE POWER PACK

Revolutionary innovation at its best, - an ALMAC product trademark.

ATS

AUTOMATIC TENSIONER SYSTEM

STANDARD

The ATS zero maintenance track tensioning system is directly connected to and controlled by the main hydraulic system



AES

ANTI-ENTRAPMENT SYSTEM

STANDARD

The AES anti-entrapment system is designed to prevent serious injury by stopping the unit and allowing the operator to safely remove himself.



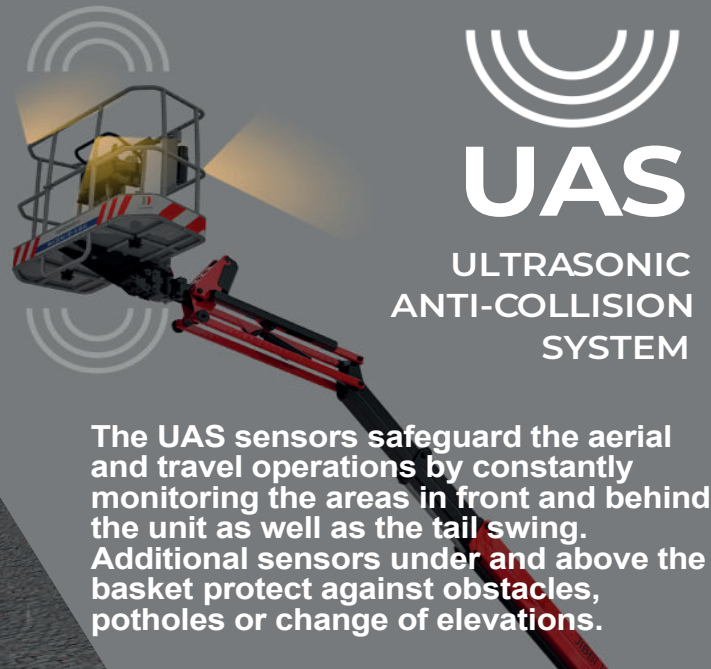
WORK LIGHTS

Work year-round in any condition



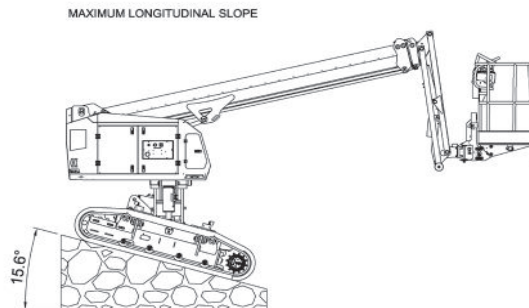
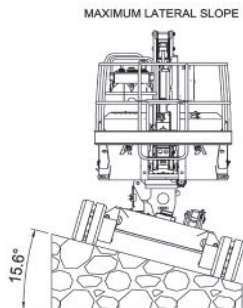
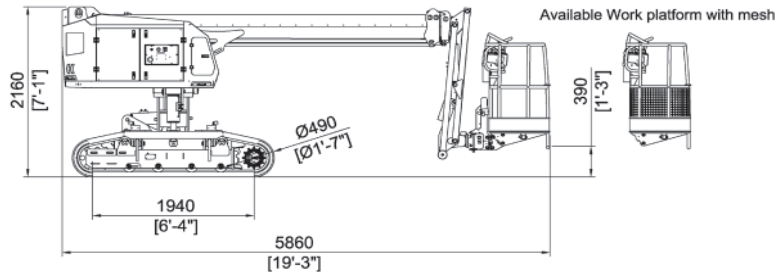
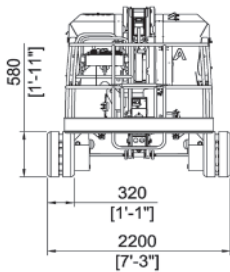
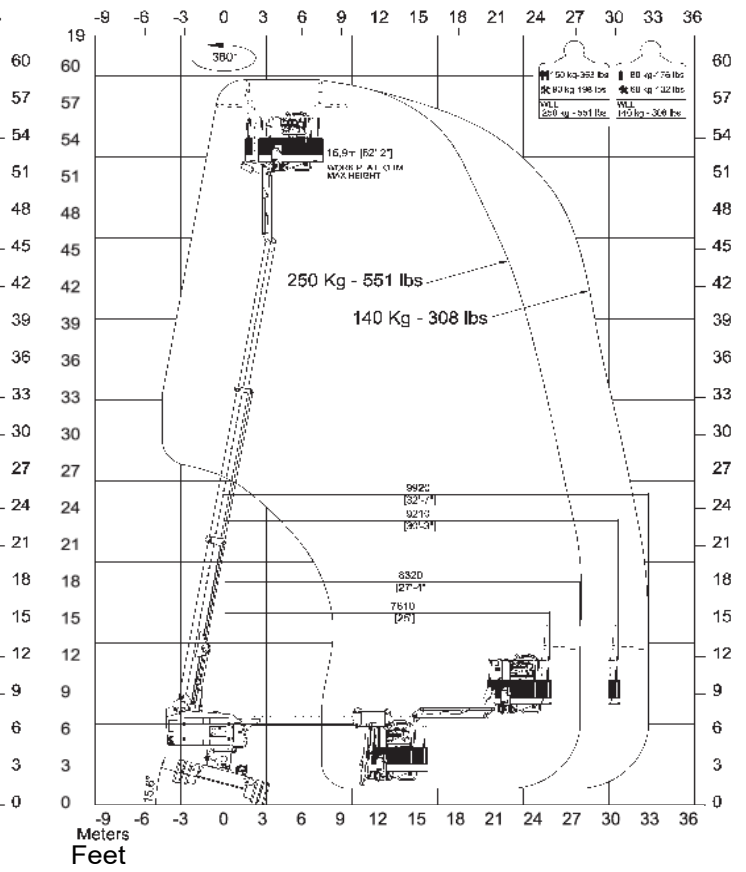
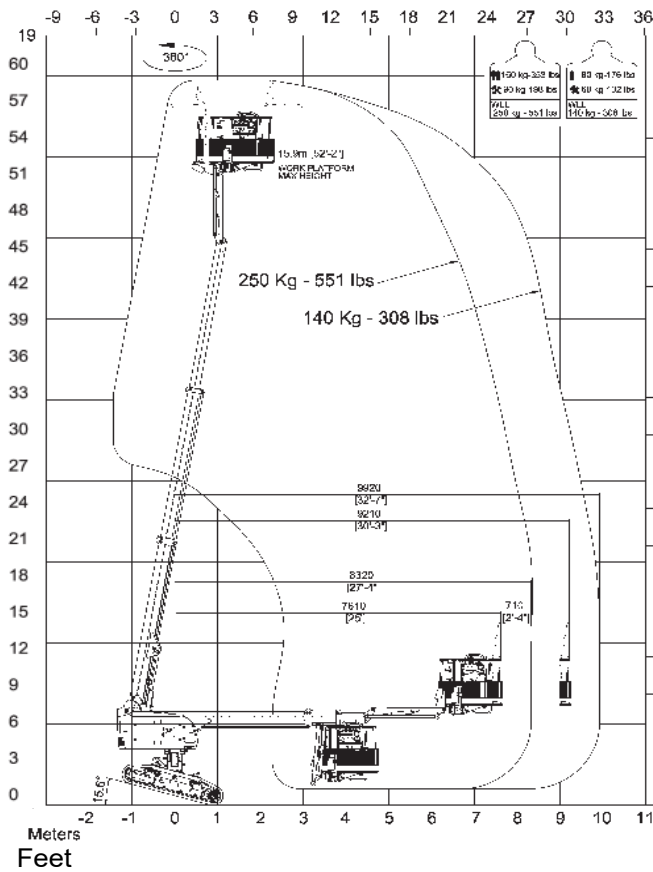
UAS

ULTRASONIC ANTI-COLLISION SYSTEM



The UAS sensors safeguard the aerial and travel operations by constantly monitoring the areas in front and behind the unit as well as the tail swing. Additional sensors under and above the basket protect against obstacles, potholes or change of elevations.

Jibbi 1890 PRiMO



Technical data

Jibbi 1890 PRiMO

Max working height	59 ft
Max height basket floor	52.2 ft
Max moving height	45.3 ft
Max outreach (load 309 lbs)	32.5 ft
Max outreach (load 551 lbs)	27.3 ft
Rotation angle	+/- 190°
Basket size	5.90 x 2.30 ft
Basket rotation angle	+/- 70°
Max basket capacity	551 lbs (2 p.)
Length in stowed position	19.2 ft
Width	7.2 ft
Min height in stowed position	7.1 ft
Longitudinal leveling	+/-15.6°
Lateral leveling	+/-15.6°
Max gradeability	25°
Max side greadeability	25°
Drive speed (fast)	2.8 mph
Drive speed while at high	0.37 mph
Anti-Entrapment System	Yes

Weight

	ELC	LTH	
Traffic load (Load in basket 309 lbs)	102.1 psf	95.2 psf	95.4 psf
Total weight	~13,889 lbs	~12,941 lbs	~13,029 lbs

Power

	Lead acid power pack 420Ah-48V	Lithium power pack 330Ah-48V	Lithium power pack 440Ah-48V
Main Power Source			
Re-charging time - Output current 65A at 230V; 25A at 85V	6.5 h at 230V	5.0 h a 230V	6.5 h a 230V
N°1 battery charger 85-265V 50/60Hz 65A max - Automatic setting		Yes	
N°2 Electric Gearmotors 7.5 kW 48V each (IP67)		Yes	
Eletric pump 4.5KW 48V		Yes	

Extras -(Optional)

Kit Works Lights	Yes
Arctic lubricant for cold climate	Yes
Ultrasonic Anti-Collision System	Yes

ALMACRAWLER 

