

Technical sheet :

MRT 3570

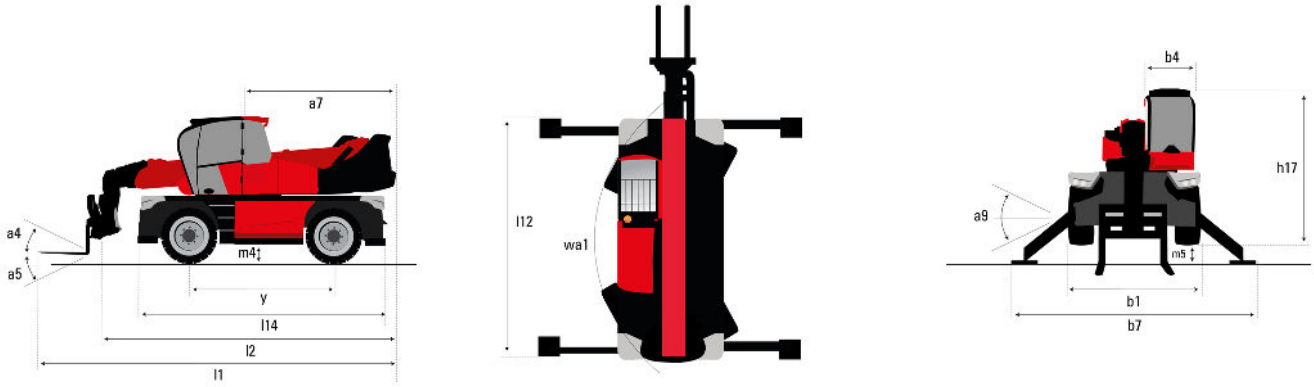
VISION +



 **MANITOU**
HANDLING YOUR WORLD

Capacities		Imperial
Max. capacity		15432 lb
Max. lifting height		113 ft 10 in
Max. outreach		91 ft 10 in
Weight and dimensions		
Overall width	b1	8 ft 2 in
Overall height	h17	10 ft 8 in
Overall cab width	b4	3 ft 2 in
Ground clearance	m4	1 ft 2 in
Wheelbase	y	12 ft 4 in
Tilt-up angle	a4	13 °
Tilt-down angle	a5	108 °
Turret rotation		360 °
Overall weight		52470 lb
Forks length / width / section	l / e / s	47 in x 5 in x 2 in
Wheels		
Standard tyres		17,5_R25
Drive wheels (front / rear)		2 / 2
Steering mode		2 wheel steer, 4 wheel steer, Crab mode
Stabilisers		
Stabs Type		Telescopic Triplex
Controls with stabs		Stabs Commands Individual or Simultaneous
Engine		
Engine brand		Yanmar
Engine norm		Stage V / Tier 4
Engine model		4TN107FTT-6SMU2
I.C. Engine power rating / Power (kW)		211 Hp / 155 kW
Max. torque / Engine rotation (min)		805 Nm @ 1500 rpm
Number of cylinders - Capacity of cylinders		4 - 279 in³
Engine cooling system		Water cooled
Number of batteries / Battery / Batteries capacity		2 x 12 V / 120 Ah
Battery starting current		(EN)850 A
Transmission		
Transmission type		Hydrostatic with CVT
Gearbox		Speedshift
Max. travel speed		25 mi/h
Drawbar pull (Laden)		9300 daN
Parking brake		Automatic negative parking brake
Service brake		Oil-immersed multi-discs braking on front & rear axles
Performances		
Gradeability (laden / unladen)		29 % / 38.70 %
Hydraulics		
Hydraulic pump type		Variable displacement pump
Hydraulic flow		185 l/min
Hydraulic Pressure		5076 PSI
Tank capacities		
Engine oil		3 US gal
Hydraulic oil		79 US gal
Fuel tank		85 US gal
Diesel Exhaust fluid (AdBlue® type)		6 US gal
Noise and vibration		
Noise at driving position (LpA)		68 dB
Environmental noise (LWA)		109 dB
Miscellaneous		
Steering wheels (front / rear)		2 / 2
Controls		2 Joysticks
Safety cab homologation		Cabin ROPS - FOPS Level 2
Attachment recognition system (E-Reco)		Standard

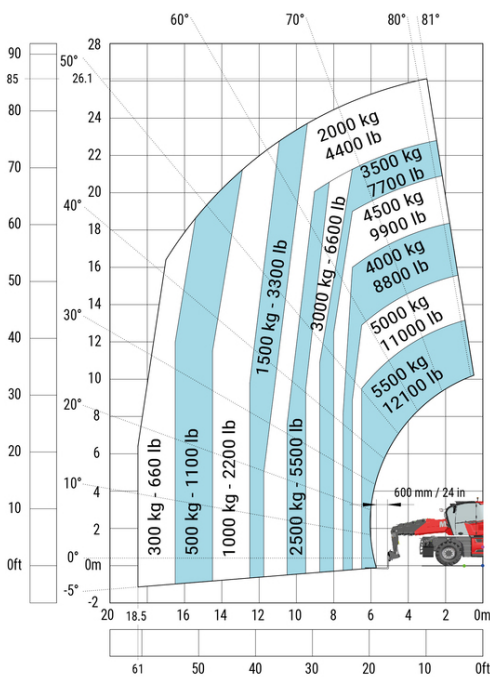
MRT 3570 - Dimensional drawing



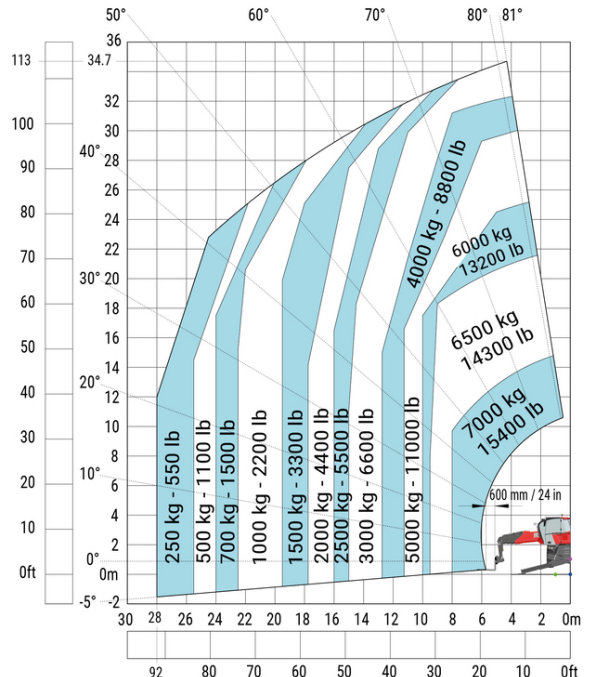
Other data	Imperial
Overall length (with forks)	33 ft
Length to face of forks	29 ft 1 in
Length of frame	22 ft 4 in
Wheelbase	12 ft 4 in
Ground clearance	1 ft 2 in
Counterweight offset (turret at 90°)	12 ft 4 in
Tilt-up angle	13 °
Tilt-down angle	108 °
Overall length at stabilisers	21 ft 4 in
External turning radius (over tyres)	16 ft 7 in
Overall width	8 ft 2 in
Overall width with stabilisers extended	24 ft 4 in
Overall cab width	3 ft 2 in
Overall height	10 ft 8 in
Frame levelling corrector	+/- 8 °
Ground clearance under front tires on stabilizers	1 ft 5 in

MRT 3570 - Load chart

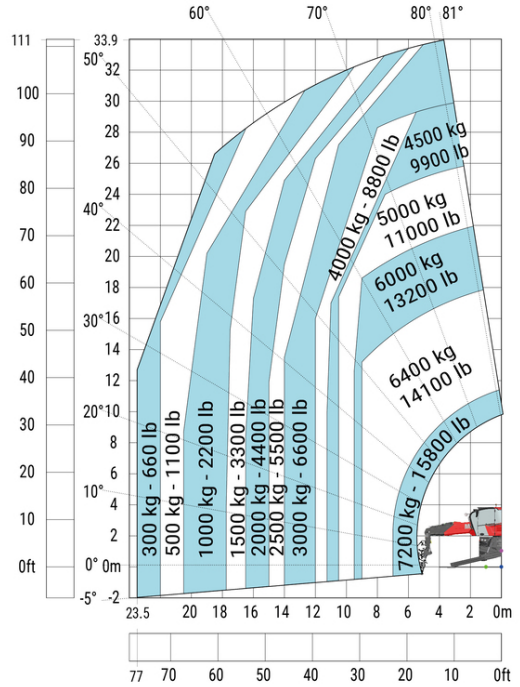
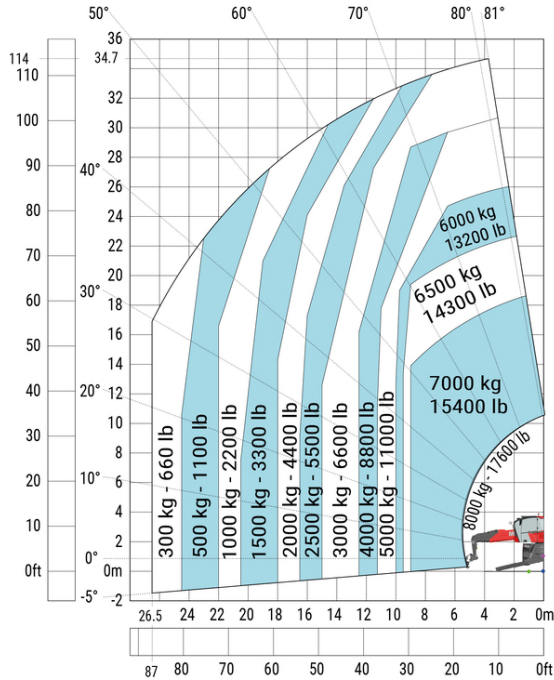
Machine on tyres with forks Imperial



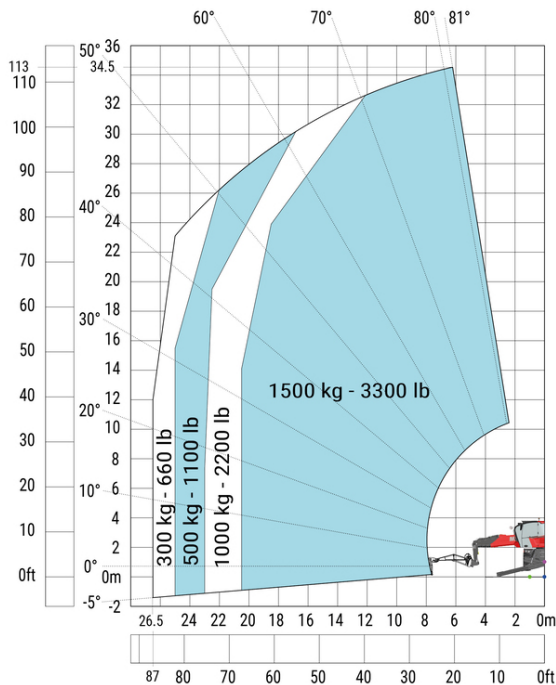
Machine on lowered stabilisers with forks Imperial

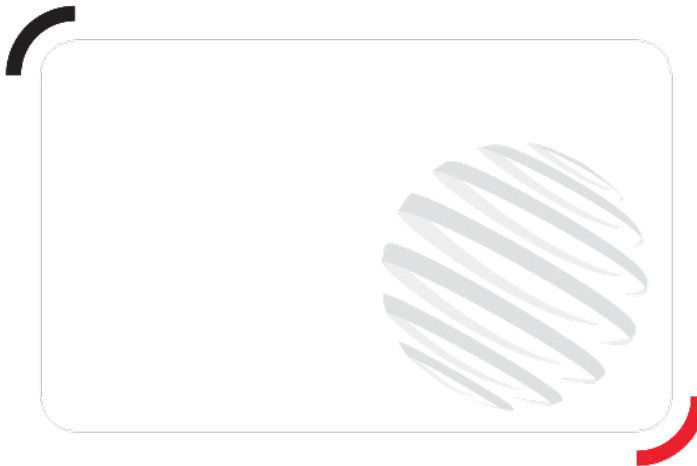


Machine on lowered stabilisers with hook 9000 kg (Imperial) Machine on lowered stabilizers with winch 7200 lbs (imperial)



Machine on lowered stabilisers with 1500 kg jib Imperial





Siège Social
430 rue de l'Aubinière - 44150 Ancenis Cedex - France
Tel: +33(0)2 40 09 10 11 - Fax: +33 (0)2 40 09 10 97
www.manitou.com



This brochure describes versions and configuration options for Manitou products which may be fitted with different equipment. The equipment described in this brochure may be standard, optional or not available depending on version. Manitou reserves the right to change the specifications shown and described at any time and without prior warning. The manufacturer is not liable for the specifications given. For more information, contact your Manitou dealer. Non-contractual document. Product descriptions may differ from actual products. List of specifications is not comprehensive. The logos and visual identity of the company are the property of Manitou and may not be used without authorisation. All rights reserved. The photos and diagrams contained in this brochure are provided for information only.

MANITOU BF SA - Limited company with board of directors - Share capital: 39,668,399 euros - 857 802 508 RCS Nantes