

SR5719E

COMPACT ELECTRIC ROUGH TERRAIN TELEHANDLER



- Zero emission electric compact rough terrain telehandler with lithium-ion batteries
- Fully enclosed cab
- Full time 4-wheel drive
- Power assisted steering
- Proportional joystick
- Simple to operate and maintain

 **snorkel**[™]
www.snorkellifts.com

COMPACT ELECTRIC ROUGH TERRAIN TELEHANDLER

SR5719E

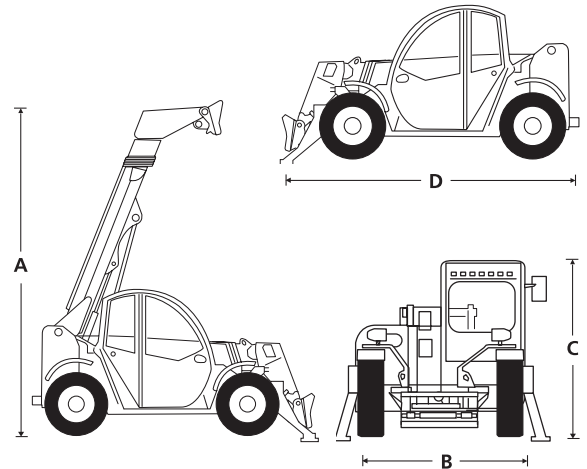
CAPABILITIES	SR5719E*
Max. lift capacity	5,732 lbs
Max. lift height (A)	19 ft
Max. forward reach	10 ft 4 in

DIMENSIONS	
Overall width (B)	6 ft 2 in
Stowed height (C)	6 ft 4 in
Length to fork face (D)**	13 ft 9 in
Wheelbase	8 ft 3 in
Ground clearance	9 in

PERFORMANCE	
Max. drive speed	7.5 mph
Raise/lower time	6.9/5 sec
Hydraulic flow (per minute)	21 gal
Hydraulic pressure	3,336 psi
Hydraulic oil capacity	18.5 gal
Outside turning radius	10 ft 8 in
Tires	12 x 16.5

POWER	
Power source	Lithium-ion 80V 300Ah batteries
Operating temperature	(-)4°F - (+)113°F
Charger	on-board, single phase

WEIGHT	
Weight	10,582 lbs



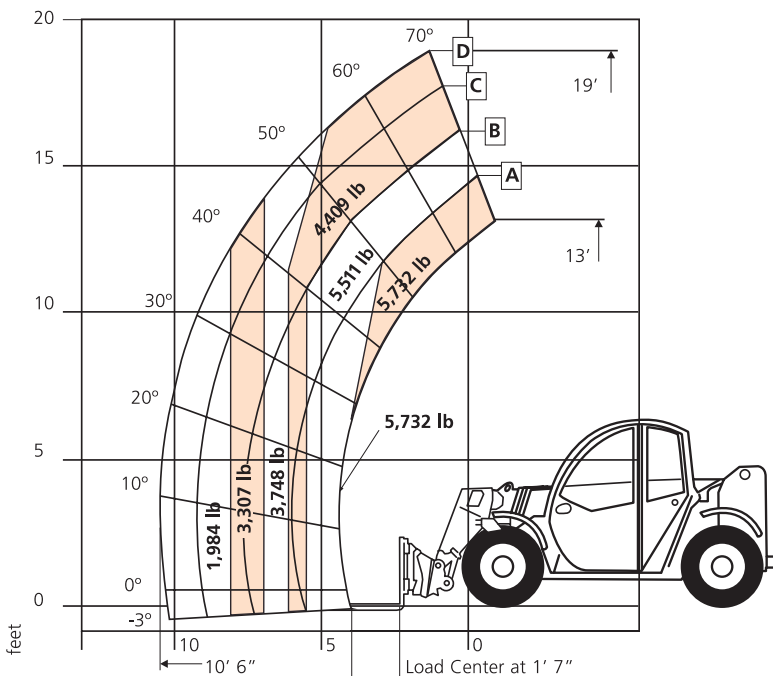
STANDARD FEATURES

- Lithium-ion batteries
- Easy access to components for servicing
- Full-time 4-wheel drive
- 4-wheel steer
- Selectable front, crab & coordinated steering modes
- Auxiliary hydraulic circuit on the boom
- Variable speed hydrostatic drive
- Fully enclosed cab with heat
- Proportional joystick
- Illuminated gauge and switch panels
- Color LCD display with machine & engine diagnostics
- Adjustable suspension seat
- LED work lights on boom (2)
- 2000 charging cycles/2 year*** lithium battery warranty
- 2 year parts & labor, 5 year structural warranty
- ANSI compliant

OPTIONS

- Special paint colors
- Multiple options for carriages, tires, and fork tines
- External three-phase fast charger
- Cold weather synthetic oil
- Swivel hook
- Hydraulic tank heater
- Universal skidsteer attachments

LOAD CHART



ANSI Specification
©Snorkel 2024

Specifications subject to change without notice. Photos and diagrams are for promotional purposes only. Refer to appropriate Snorkel operators manual for detailed instructions on proper use and maintenance.
***Whichever comes first. Refer to Snorkel warranty policy for full details, limitations and restrictions.
Batteries at the end of their life are to be returned to Snorkel for recycling.
**Length to fork face = length from carriage to counterweight
*Preliminary specification - confirm at time of ordering

snorkel www.snorkelifts.com

P.O. Box 1160
St. Joseph, MO 64502-1160, USA
Tel: 1 (785) 989-3000
Toll-Free: 1 (800) 255-0317
Sales Fax: 1 (785) 989-3070
Parts Fax: 1 (785) 989-3077