

# STEVENSON

CRANE - RIGGING - HEAVY HAUL



## Snorkel 2100SJ

### KEY FEATURES

- 8' Platform With 1000lb Capacity
- Welder Ready
- Glazier Kit
- Lateral Travel



## LARGEST SELF PROPELLED

TELESCOPIC MEGA BOOM



216 ft  
Working Height



770 lbs  
Platform Capacity



92,000 lbs  
Weight



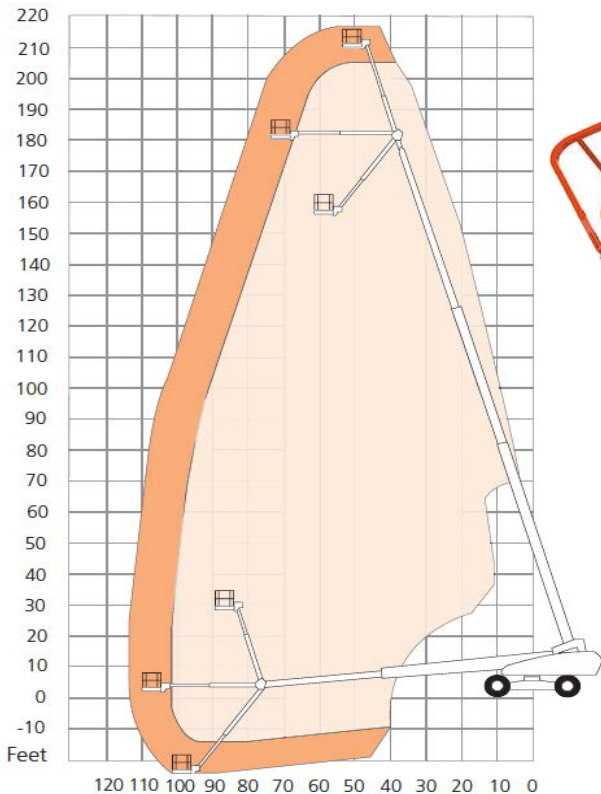
DIMENSIONS	2100SJ*
Max. working height	216 ft
Max. platform height (A)	210 ft
Max. horizontal reach	115 ft
Platform size	8 ft x 3 ft
Overall width (B) (axles retracted)	8 ft 2 in
Operational width (axles extended)	18 ft
Stowed length (C)	72 ft
Transport length	51 ft
Stowed height (D)	10 ft
Ground clearance	13 in

PERFORMANCE	
Platform capacity (SWL) (unrestricted)	770 lbs
Platform capacity (SWL) (restricted)	1000 lbs
Max. drive height	210 ft
Max. wind speed	28 mph
Max. drive speed (stowed)	2.5 mph
Max. drive speed (elevated)	0.15 mph
Jib length	30 ft
Jib working arc	128° (-55° to +73°)
Platform rotation	150°
Superstructure rotation (continuous)	360°
Tailswing (axles retracted)	80.7 in
Tailswing (axles extended)	27.5 in
Raise/lower time	5/5.5 min
Gradeability	35%
Inside turning radius (axles retracted)	10 ft
Inside turning radius (axles extended)	8 ft 6 in
Outside turning radius (axles retracted)	16 ft 4 in
Outside turning radius (axles extended)	21 ft
Tires	445/50-710 foam filled 24 ply
Controls	proportional joystick
Drive system	4-wheel drive
Working envelope volume	7.11 million ft <sup>3</sup>

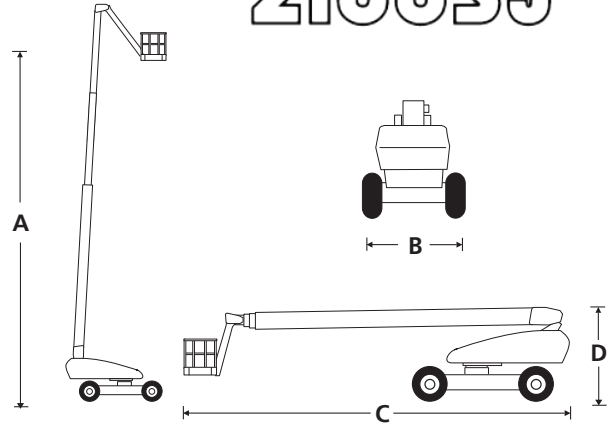
POWER	
Power source	Kubota V3800, 115 hp - Tier 4 Final

WEIGHT	
Weight	92,000 lbs

### WORKING ENVELOPE



# snorkel 2100SJ



### STANDARD FEATURES

- Snorkel Guard™ secondary guarding system
- Secondary platform controls
- Hydraulic platform rotation
- 5 steering modes - front axle, rear axle, crab, complementary & lateral
- 360° continuous turntable rotation
- All proportional controls
- Tool tray
- Remote lower control panel
- Flashing amber light
- Dual lanyard attachment points
- Foam filled tires
- 4-wheel drive
- Power line to platform
- Snorkel OnSite™ telematics - 60 months
- Drive motion alarm
- 2 year parts & labor, 5 year structural warranty
- ANSI compliant

### OPTIONS

- Special paint colors
- Airline to platform
- AC generator package 110V/240V
- Cold weather package
- Extreme cold weather package
- Extreme environment package
- Light package
- Glazier package
- Environmental hydraulic oil

## STEVENSON

CRANE - RIGGING - HEAVY HAUL

BOLINGBROOK, IL  
410 Stevenson Drive  
Bolingbrook, IL 60440  
Phone: (630) 972-9199  
Fax: (630) 972-0303

SOUTH HOLLAND, IL  
16675 Van Dam Road  
South Holland, IL 60473  
Phone: (219) 972-9199  
Fax: (708) 331-4454

GARY, IN  
1 N Broadway  
Gary, IN 46401  
Phone: (219) 972-9199

WHITING, IN  
1032 119th Street  
Suite B  
Whiting, IN 46394  
Phone: (219) 972-9199

